

# TENON MOUNTED ARM

## XAZ

PROJECT NAME: \_\_\_\_\_

PROJECT TYPE: \_\_\_\_\_

### FEATURES

#### Arm

Durable corrosion resistant, cast aluminum construction.

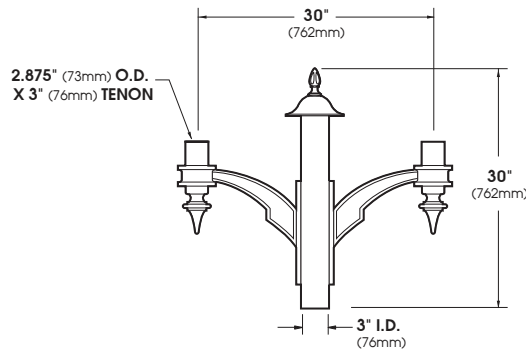
#### Finish

Electrostatically applied TGIC Polyester Powder Coat on substrate prepared with 20 PSI power wash at 140°F. Four step media blast and iron phosphate pretreatment for protection and paint adhesion. 400°F bake for maximum hardness and durability.



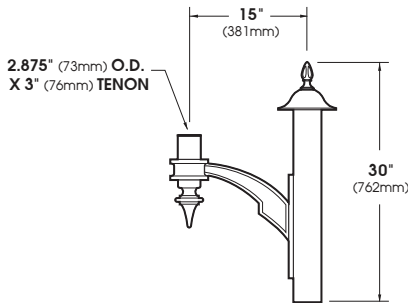
### XAZ-UP

Patent pending



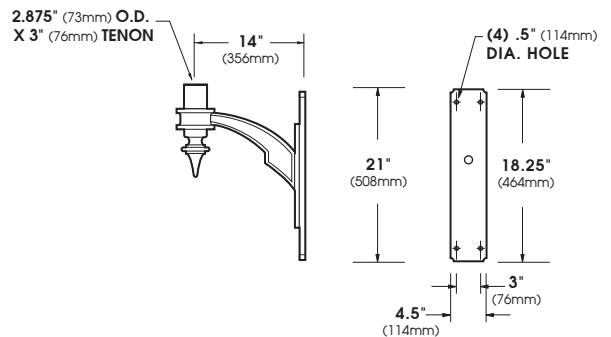
### XAZ-UP-2-180

EPA = 1.29



### XAZ-UP-1

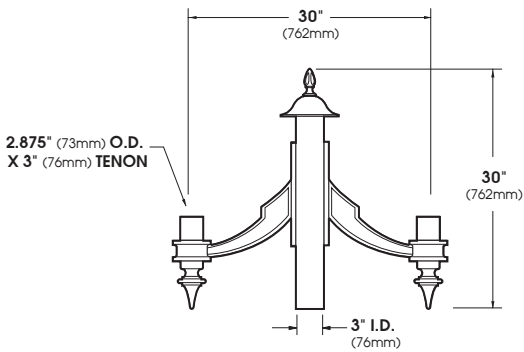
EPA = 0.90



### XAZ-UP-WM

EPA = 0.52

SCALE: 1/2"=1'

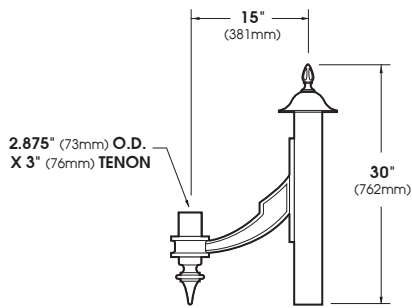


**XAZ-DN-2-180**  
EPA = 1.29

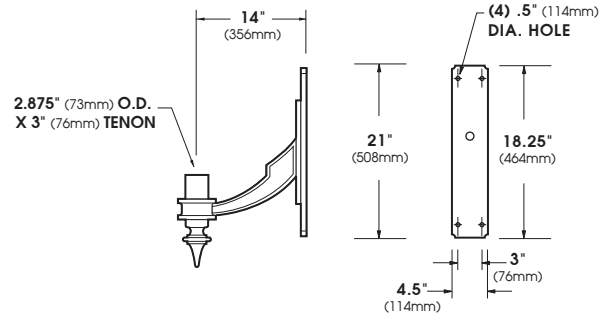


**XAZ-DN**

Patent pending



**XAZ-DN-1**  
EPA = 0.90



**XAZ-DN-WM**  
EPA = 0.52

SCALE: 1/2"=1'

## ORDERING INFORMATION

Spec/Order Example: XAZ-4-120/RAL-8019-S

Positioning	<input type="checkbox"/> XAZ-UP	<input type="checkbox"/> XAZ-DN						
Configuration	<input type="checkbox"/> XAZ-WM	<input type="checkbox"/> XAZ-1	<input type="checkbox"/> XAZ-2-180	<input type="checkbox"/> XAZ-3-180	<input type="checkbox"/> XAZ-3-120	<input type="checkbox"/> XAZ-4-120	<input type="checkbox"/> XAZ-4-90	<input type="checkbox"/> XAZ-5-90
Finish*	<input type="checkbox"/> Black RAL-9005-T	<input type="checkbox"/> White RAL-9003-T	<input type="checkbox"/> Grey RAL-7004-T	<input type="checkbox"/> Dark Bronze RAL-8019-T	<input type="checkbox"/> Green RAL-6005-T	*Standard texture finish For smooth finish replace suffix "T" with suffix "S" (Example: RAL-9005-S) Consult factory for custom colors		