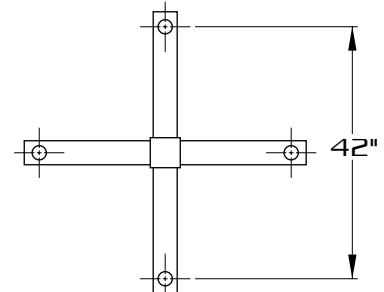
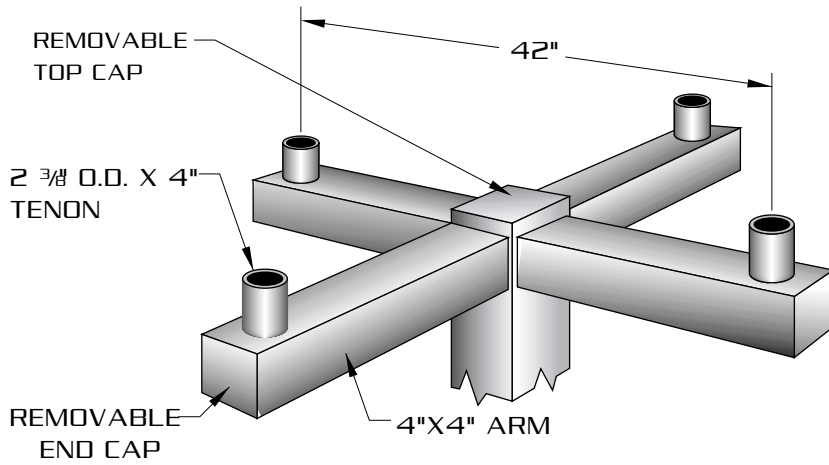
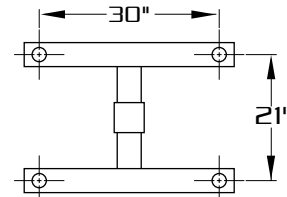
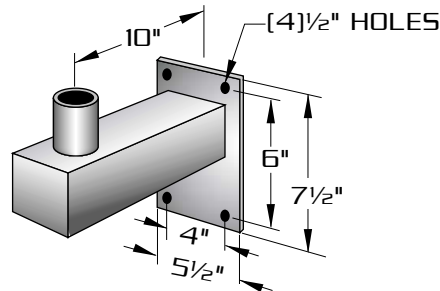


# ASA / SSA

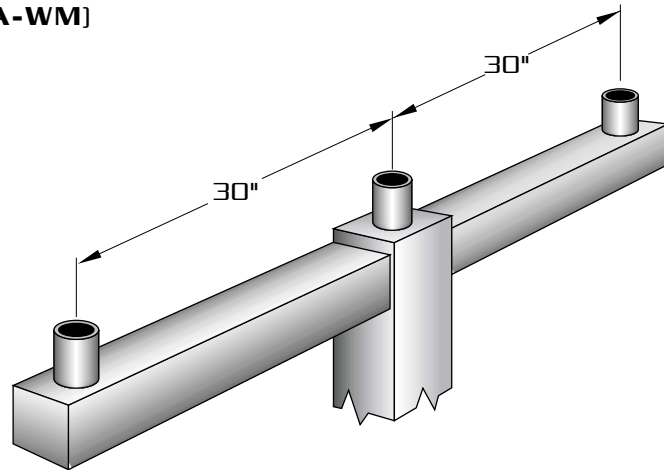
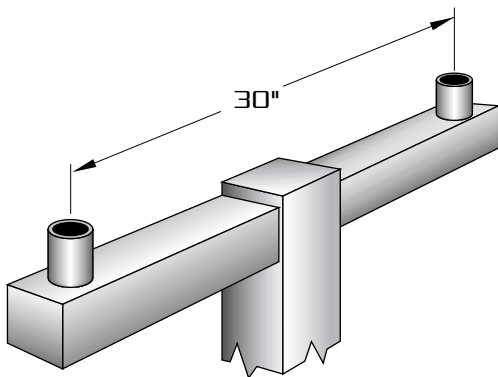


[ALUMINUM=**ASA-4-90**]  
[STEEL=**SSA-4-90**]  
E.P.A.= 1.72



[ALUMINUM=**ASA-WM**]  
[STEEL=**SSA-WM**]

[ALUMINUM=**ASAH-4**]  
[STEEL=**SSAH-4**]  
E.P.A.= 1.72



[ALUMINUM=**ASA-2-180**]  
[STEEL=**SSA-2-180**]  
E.P.A.= 1.27

[ALUMINUM=**ASA-3-180**]  
[STEEL=**SSA-3-180**]  
E.P.A.= 2.31



ALUMINUM-	ASA-WM	ASA-1	ASA-2-180	ASA-3-90	ASA-3-180	ASA-4-90	ASAH-4	ASA-5-90
STEEL-	SSA-WM	SSA-1	SSA-2-180	SSA-3-90	SSA-3-180	SSA-4-90	SSAH-4	SSA-5-90

**ALUMINUM:** EXTRUDED FROM 6063 ALLOY ALUMINUM HEAT TREATED TO PRODUCE A T6 TEMPER.

**STEEL:** FABRICATED FROM HIGH GRADE STRUCTURAL QUALITY HOT ROLLED CARBON STEEL.