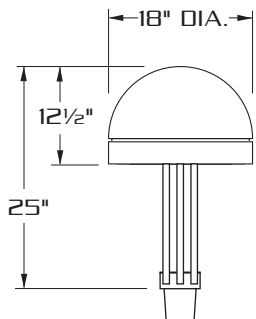
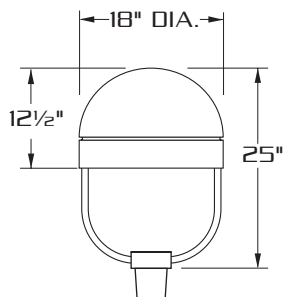


DSBMP T3

[175 WATT MAX.]



SIDE VIEW



FRONT VIEW

E.P.A.- 1.30



SPECIFICATIONS

HOUSING: ONE PIECE HEAVY WALL SPUN ALUMINUM HOUSING. HEAVY WALL SPUN ALUMINUM DOME.

LENS ASS'Y: ONE PIECE HINGED HEAVY WALL DIE FORMED ALUMINUM DOOR FRAME SURROUNDS 3/16" CLEAR TEMPERED GLASS LENS. GLASS IS SEALED TO DOOR WITH HIGH TEMPERATURE SILICONE SEAL. CAPTIVE THUMB SCREW DISENGAGES LENS ASSEMBLY AND ACTIVATES ACCUHINGE™ HINGE TO ALLOW LENS ASSEMBLY TO HINGE AWAY FROM HOUSING FOR LUMINAIRE ACCESS WITHOUT THE USE OF TOOLS.

OPTICS: COMPUTER DESIGNED ONE PIECE SEMI SPECULAR HYDROFORMED REFLECTOR. COMBINES WITH CLEAR TEMPERED GLASS LENS TO PRODUCE A HIGHLY EFFICIENT, SHARP CUTOFF.

GASKETING: CLOSED CELL EPDM GASKETING COMPRESSED BETWEEN DOOR AND HOUSING WORKS IN COMBINATION WITH ACCUHINGE™ HINGE TO PRESSURE SEAL OPTICAL CHAMBER.

LAMP HOLDER: MEDIUM BASE PORCELAIN.

LAMP: [BY OTHERS]

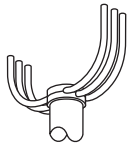
BALLAST: H.P.F./C.W.A. AUTOTRANSFORMER. -20° STARTING TEMPERATURE.

ARM: SIX (6) EXTRUDED ALUMINUM (.84 O.D.) ARMS WELDED TO A CAST ALUMINUM POLE TOP FITTER. ARMS ARE INTERNALLY WELDED TO HOUSING.

FINISH: POLYESTER POWDER COAT-STATE OF THE ART 20 PSI PRESSURE POWER WASH AT 140° TEMPERATURE INCORPORATES FOUR STEP IRON PHOSPHATE PROCESS TO CLEANSE AND PRETREAT THE METAL SURFACE FOR MAXIMUM PAINT ADHESION. ELECTROSTATICALLY APPLIED TEXTURED POLYESTER POWDER TOPCOAT IS BAKED AT 400° TEMPERATURE FOR MAXIMUM HARDNESS AND EXTERIOR DURABILITY.

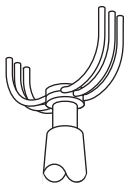


MOUNTING STYLES



PTA

STANDARD TENON ASSEMBLY FOR 4" & 5" DIA. POLES.



PTB

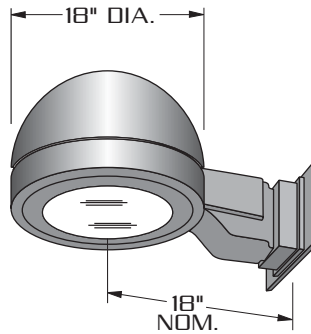
TENON ASSEMBLY FOR TAPERED OR SQUARE POLES. TENON ASSEMBLY IS ALSO AVAILABLE AS AN OPTION FOR 4", 5" OR 6" DIA. POLES

SPECIFY MOUNTING ASSEMBLY:

PTB27-TO FIT OVER 2 7/8" O.D. TENON.

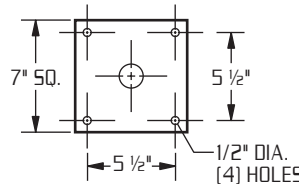
PTB23-TO FIT OVER 2 3/8" O.D. TENON.

WALL MOUNT

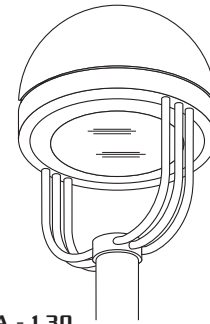


CORROSION RESISTANT CAST ALUMINUM CONSTRUCTION. ARM IS SUPPLIED WITH REMOVABLE CAST ALUMINUM TOP CAP FOR EASY ACCESS TO ELECTRICAL COMPONENTS.

WALL PLATE



**LAMP SIZE:
70 - 175 WATT**



E.P.A.= 1.30

OPTICAL SYSTEMS ENCLOSED IN IMPACT RESISTANT TEMPERED GLASS DIFFUSER.

ORDERING INFORMATION

MODEL NO. : DSBM PT3	OPTICS	WATTAGE TYPE VOLTAGE	MOUNTING	FINISH	OPTIONS
MODEL NO. :	OPTICS	LAMP	MOUNTING	FINISH	OPTIONS
D	<input type="checkbox"/> TYPE II II (segmented)	<input type="checkbox"/> 175 <input type="checkbox"/> HPS <input type="checkbox"/> 120	 <input type="checkbox"/> PTA	STANDARD TEXTURED FINISH	<input type="checkbox"/> CLEAR POLYCARBONATE DIFFUSER LX
S	<input type="checkbox"/> TYPE III III (segmented)	<input type="checkbox"/> 150 <input type="checkbox"/> MH <input type="checkbox"/> 208	<input type="checkbox"/> PTB23 (TO FIT 2 3/8" O.D.)	<input type="checkbox"/> BLACK RAL-9005-T	<input type="checkbox"/> HOUSE SIDE SHIELD HS
B	<input type="checkbox"/> TYPE IV IV (segmented)	<input type="checkbox"/> 100 <input type="checkbox"/> MV <input type="checkbox"/> 240		<input type="checkbox"/> WHITE RAL-9003-T	<input type="checkbox"/> PHOTO CELL + VOLTAGE (EXAMPLE: PC120V) PC+V
M	<input type="checkbox"/> TYPE IV (FORWARD THROW) IV (segmented)	<input type="checkbox"/> 75 <input type="checkbox"/> 277	<input type="checkbox"/> PTB27 (TO FIT 2 7/8" O.D.)	<input type="checkbox"/> GREY RAL-7004-T	<input type="checkbox"/> TWIST LOCK PHOTO CELL+VOLTAGE (EXAMPLE TPC120V) TPC+V
P	<input type="checkbox"/> TYPE V V-SQ (segmented)	<input type="checkbox"/> 70 <input type="checkbox"/> 480	WALL MOUNT <input type="checkbox"/> WM	<input type="checkbox"/> DRK BRONZE RAL-8019-T	<input type="checkbox"/> TWIST LOCK RECEPTACLE ONLY TPR
T		<input type="checkbox"/> MT		<input type="checkbox"/> GREEN RAL-6005-T	<input type="checkbox"/> SINGLE FUSE (120V., 277V) SF
3		MEDIUM BASE LAMP ONLY		FOR SMOOTH FINISH REMOVE SUFFIX "T" (EXAMPLE: RAL-9500)	<input type="checkbox"/> DOUBLE FUSE (208V., 240V) DF
				SEE WEBSITE FOR ADDITIONAL COLORS	<input type="checkbox"/> TAMPER PROOF TP