

SOLID STATE AREA LIGHTING

LG SERIES-LED

SPECIFICATIONS

LUMINAIRE

One piece high impact polycarbonate globe provided with durable corrosion resistant cast aluminum fitter and cage. Standard fitter has 3" I.D. opening for tenon. All hardware is Stainless Steel.

LED POWER ARRAY™

Three-dimensional array of individual LED Tubes fastened to a retaining plate. Each LED Tube consists of circuit board populated with a multiple of LED's and is mechanically fastened to a radial aluminum heat sink. An acrylic Lens and end cap protects the LED Tube's internal components.

VERTICAL POWER ARRAY™ WITH GLASS REFRACTOR:

LED Tubes are aligned vertically and arranged radially to produce an even raw light distribution that simulates standard light sources. Array is secured within a 6" Prismatic Glass Refractor which provides the optical control. Used in conjunction with a clear smooth globe.

VERTICAL POWER ARRAY™: LED Tubes are aligned

vertically and arranged radially to produce an even raw light distribution that simulates standard light sources. Produces a minimal glare, symmetric diffuse light distribution. Used in conjunction with an opal smooth diffusing globe.

LED EMITTERS

High Output LED's are driven at 350mA for nominal 1 Watt output each. LED's are available in standard Neutral White (4000K), or optional Cool White (5000K) or Warm White (3000K). Consult Factory for other LED options.

LED DRIVER

UL and CUL recognized High Power Factor, Constant Current LED drivers operate on input voltages from 120-277VAC, 50/60hz. Consult Factory for 347-480VAC. Driver is mechanically fastened to a retaining bracket. Main power quick disconnect provided. Driver has a minimum 4KV of internal surge protection, 10KV & 20KV Surge Protector optional. Dimming and High-Low Driver options available.

FINISH

Polyester powder coat incorporates four step iron phosphate process to pretreat metal surface for maximum adhesion. Top coat is baked at 400°F for maximum hardness and exterior durability.

PROJECT NAME: _____

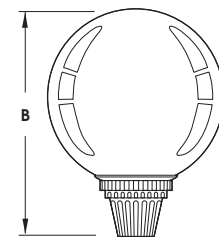
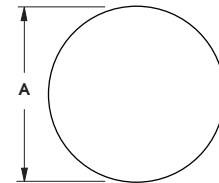
PROJECT TYPE: _____



LG*

*LG18 SHOWN WITH -YA FITTER

PATENT PENDING



FIXTURE	A	B
LG24	24" 673mm	33" 813mm
LG22	22" 546mm	28.5" 660mm
LG18	18" 673mm	24" 813mm
LG16	16" 546mm	22" 660mm
LG14	14" 435mm	19.5" 533mm



2014250

LG SERIES - LED

PATENT PENDING

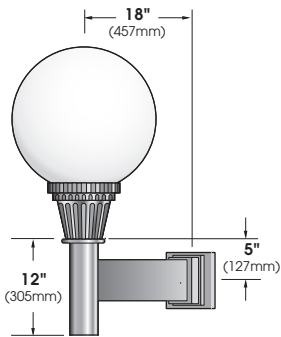
SPECIFICATIONS

OPTIONAL FITTERS



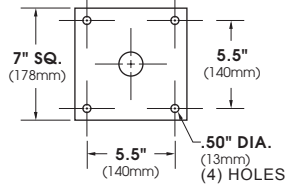
* AVAILABLE WITH MINI BUTTON PHOTOCELLS
*SEE OPTIONS

WALL MOUNT

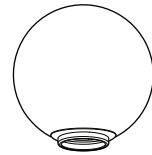


ARM BRACKET EXTRUDED AND CAST ALUMINUM CONSTRUCTION.

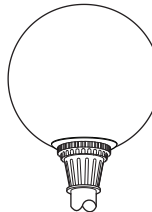
WALL PLATE



LED POWER ARRAY™ MODULES



LG22-LED E.P.A.= 2.20



LG24-LED E.P.A.= 2.59

GLASS REFRACTOR w/ VERTICAL ARRAY
Available in:
6 Array 36 LED Max..

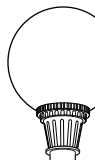
VERTICAL ARRAY
Available in:
6 Array 48 LED Max.
8 Array 64 LED Max.



LG14-LED E.P.A.= 1.01



LG16-LED E.P.A.= 1.26

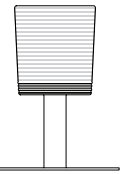


LG18-LED E.P.A.= 1.53

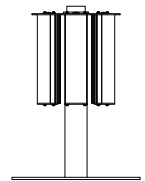
GLASS REFRACTOR w/ VERTICAL ARRAY
Available in:
6 Array 36 LED Max..

VERTICAL ARRAY
Available in:
8 Array 48 LED Max.*
6 Array 36 LED Max.

*LG18 Only



GRV - Glass Refractor w/ Vertical Array
Base mount



VPA - Vertical Array
Base mount

Spec/Order Example: **LG22-YA-LED/VPA-SYM/48NW347/4-90/RAL6005-S/HLSW**

ORDERING INFORMATION

LUMINAIRE-FITTER	OPTICS	# of LED's	COLOR	VOLTAGE	MOUNTING	FINISH	OPTIONS									
LUMINAIRE	OPTICS	LED	COLOR	VOLTAGE	MOUNTING	FINISH	OPTIONS									
<input type="checkbox"/> LG24-LED <input type="checkbox"/> LG22-LED <input type="checkbox"/> LG18-LED <input type="checkbox"/> LG16-LED <input type="checkbox"/> LG14-LED FITTER <input type="checkbox"/> -YA <input type="checkbox"/> -YB <input type="checkbox"/> -YC <input type="checkbox"/> -YD <input type="checkbox"/> -YE	GLASS REFRACTOR (CLEAR ACRYLIC STANDARD) <input type="checkbox"/> GRV - III <input type="checkbox"/> GRV - V VERTICAL POWER ARRAY (OPAL ACRYLIC STANDARD) <input type="checkbox"/> VPA - SYM	# of LEDs LG24/22/18/16/14 <input type="checkbox"/> 36LED (40 Watts) Wattages are Max Input Watts <table border="0"> <tr> <td>LG24/22</td> <td>LG18</td> </tr> <tr> <td><input type="checkbox"/> 64LED (71 Watts)</td> <td><input type="checkbox"/> 48LED (53 Watts)</td> </tr> <tr> <td><input type="checkbox"/> 48LED (53 Watts)</td> <td><input type="checkbox"/> 36LED (40 Watts)</td> </tr> <tr> <td><input type="checkbox"/> 36LED (40 Watts)</td> <td>LG16/14</td> </tr> <tr> <td>Wattages are Max Input Watts</td> <td><input type="checkbox"/> 36LED (40 Watts)</td> </tr> </table>	LG24/22	LG18	<input type="checkbox"/> 64LED (71 Watts)	<input type="checkbox"/> 48LED (53 Watts)	<input type="checkbox"/> 48LED (53 Watts)	<input type="checkbox"/> 36LED (40 Watts)	<input type="checkbox"/> 36LED (40 Watts)	LG16/14	Wattages are Max Input Watts	<input type="checkbox"/> 36LED (40 Watts)	<input type="checkbox"/> NW (4000K)* *STANDARD <input type="checkbox"/> CW (5000K) <input type="checkbox"/> WW (3000K) OTHER LED COLORS AVAILABLE CONSULT FACTORY VOLTAGE <input type="checkbox"/> 120 <input type="checkbox"/> 208 <input type="checkbox"/> 240 <input type="checkbox"/> 277 <input type="checkbox"/> 347 <input type="checkbox"/> 480	ARM MOUNT <input type="checkbox"/> 1 <input type="checkbox"/> 2-180 <input type="checkbox"/> 2-90 <input type="checkbox"/> 3-90 <input type="checkbox"/> 3-120 <input type="checkbox"/> 4-90 WALL MOUNT <input type="checkbox"/> WM POST TOP <input type="checkbox"/> PT	STANDARD TEXTURED FINISH <input type="checkbox"/> BLACK RAL-9005-T <input type="checkbox"/> WHITE RAL-9003-T <input type="checkbox"/> GREY RAL-7004-T <input type="checkbox"/> DARK BRONZE RAL-8019-T <input type="checkbox"/> GREEN RAL-6005-T FOR SMOOTH FINISH REPLACE SUFFIX "T" WITH SUFFIX "S" (EXAMPLE: RAL-9500-S) SEE USALTG.COM FOR ADDITIONAL COLORS	LENS OPTIONS: <input type="checkbox"/> CLEAR SMOOTH ACRYLIC CA <input type="checkbox"/> OPAL SMOOTH ACRYLIC WA <input type="checkbox"/> CLEAR SMOOTH POLYCARBONATE ... CP <input type="checkbox"/> OPAL SMOOTH POLYCARBONATE ... WP <input type="checkbox"/> HOUSE SIDE SHIELD ... HS <input type="checkbox"/> DIMMABLE DRIVER(S) (0-10V) DIM <input type="checkbox"/> HIGH-LOW DIMMING FOR HARDWIRED SWITCHING OR NON-INTEGRATED MOTION SENSOR HLSW <input type="checkbox"/> PHOTO CELL + VOLTAGE (EXAMPLE: PC120V) PC+V <input type="checkbox"/> 10KV SURGE PROTECTOR. 10SP <input type="checkbox"/> 20KV SURGE PROTECTOR (277V & 480V Only) 20SP
LG24/22	LG18															
<input type="checkbox"/> 64LED (71 Watts)	<input type="checkbox"/> 48LED (53 Watts)															
<input type="checkbox"/> 48LED (53 Watts)	<input type="checkbox"/> 36LED (40 Watts)															
<input type="checkbox"/> 36LED (40 Watts)	LG16/14															
Wattages are Max Input Watts	<input type="checkbox"/> 36LED (40 Watts)															