

SOLID STATE AREA LIGHTING

RCGS SERIES-LED

SPECIFICATIONS

LUMINAIRE

One piece high impact polycarbonate globe provided with durable corrosion resistant cast aluminum fitter and cage. Standard fitter has 3" I.D. opening for tenon. All hardware is Stainless Steel.

LED POWER ARRAY™

Three-dimensional array of individual LED Tubes fastened to a retaining plate. Each LED Tube consists of circuit board populated with a multiple of LED's and is mechanically fastened to a radial aluminum heat sink. An acrylic Lens and end cap protects the LED Tube's internal components.

VERTICAL POWER ARRAY™ WITH GLASS REFRACTOR:

LED Tubes are aligned vertically and arranged radially to produce an even raw light distribution that simulates standard light sources. Array is secured within a 6" Prismatic Glass Refractor which provides the optical control. Used in conjunction with a clear smooth globe.

VERTICAL POWER ARRAY™: LED Tubes are aligned vertically and arranged radially to produce an even raw light distribution that simulates standard light sources. Produces a minimal glare, symmetric diffuse light distribution. Used in conjunction with an opal smooth diffusing globe.

LED EMITTERS

High Output LED's are driven at 350mA for nominal 1 Watt output each. LED's are available in standard Neutral White (4000K), or optional Cool White (5000K) or Warm White (3000K). Consult Factory for other LED options.

LED DRIVER

UL and CUL recognized High Power Factor, Constant Current LED drivers operate on input voltages from 120-277VAC, 50/60hz. Consult Factory for 347-480VAC. Driver is mechanically fastened to a retaining bracket. Main power quick disconnect provided. Driver has a minimum 4KV of internal surge protection, 10KV & 20KV Surge Protector optional. Dimming and High-Low Driver options available.

FINISH

Polyester powder coat incorporates four step iron phosphate process to pretreat metal surface for maximum adhesion. Top coat is baked at 400°F for maximum hardness and exterior durability.

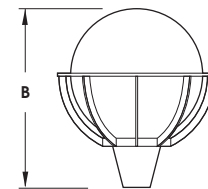
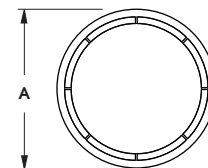
PROJECT NAME: _____

PROJECT TYPE: _____



RCGS

PATENT PENDING



FIXTURE	A	B
RCGS22	26.5" 673mm	30" 762mm
RCGS18	21.5" 546mm	24" 610mm
RCGS14	17" 432mm	19.5" 495mm

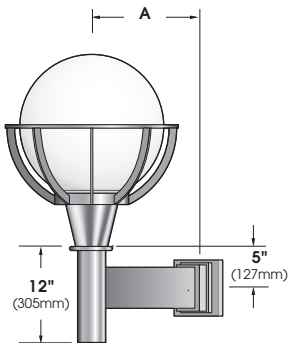


2014238

RCGS SERIES - LED

S P E C I F I C A T I O N S

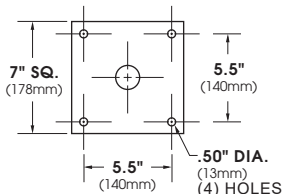
WALL MOUNT



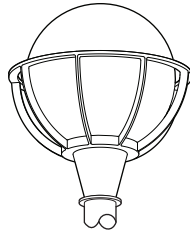
A		
RCGS22	RCGS18	RCGS14
15" 381mm	13" 330mm	11" 279mm

ARM BRACKET EXTRUDED AND CAST ALUMINUM CONSTRUCTION.

WALL PLATE



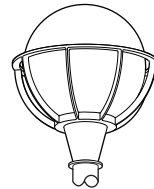
LED POWER ARRAY™ MODULES



RCGS22-LED
E.P.A.= 2.23

**GLASS REFRACTOR w/
VERTICAL ARRAY**
Available in:
6 Array 36 LED Max.

VERTICAL ARRAY
Available in:
8 Array 64 LED Max.



RCGS18-LED
E.P.A.= 1.55

**GLASS REFRACTOR w/
VERTICAL ARRAY**
Available in:
6 Array 36 LED Max.

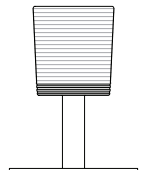
VERTICAL ARRAY
Available in:
6 Array 48 LED Max.



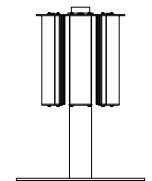
RCGS14-LED
E.P.A.= 1.00

**GLASS REFRACTOR w/
VERTICAL ARRAY**
Available in:
6 Array 36 LED Max..

VERTICAL ARRAY
Available in:
6 Array 36 LED Max.



**GRV - Glass Refractor
w/ Vertical Array**
Base mount



VPA - Vertical Array
Base mount

Spec/Order Example: RCGS22-LED/VPA-SYM/48CW277/3-120/RAL7004-T/20SP

S P E C / O R D E R I N G I N F O R M A T I O N

LUMINAIRE-FITTER	OPTICS	# of LED's	COLOR	VOLTAGE	MOUNTING	FINISH	OPTIONS
LUMINAIRE	OPTICS	LED			MOUNTING	FINISH	OPTIONS
LUMINAIRE-FITTER	GLASS REFRACTOR (CLEAR SMOOTH GLOBE)	# of LEDs		COLOR	ARM MOUNT	STANDARD TEXTURED FINISH	LENS OPTIONS:
<input type="checkbox"/> RCGS22-LED	<input type="checkbox"/> GRV - III	RCGS22	RCGS18	<input type="checkbox"/> NW (4000K)* *STANDARD	<input type="checkbox"/> 1	<input type="checkbox"/> BLACK RAL-9005-T	<input type="checkbox"/> CLEAR SMOOTH ACRYLIC
<input type="checkbox"/> RCGS18-LED	<input type="checkbox"/> GRV - V	<input type="checkbox"/> 36LED (40 Watts)	<input type="checkbox"/> 36LED (40 Watts)	<input type="checkbox"/> CW (5000K)	<input type="checkbox"/> 2-180	<input type="checkbox"/> WHITE RAL-9003-T	<input type="checkbox"/> OPAL SMOOTH ACRYLIC
<input type="checkbox"/> RCGS14-LED		RCGS14		<input type="checkbox"/> WW (3000K)	<input type="checkbox"/> 2-90	<input type="checkbox"/> GREY RAL-7004-T	<input type="checkbox"/> CLEAR SMOOTH POLYCARBONATE ...
	VERTICAL POWER ARRAY (OPAL ACRYLIC STANDARD)	<input type="checkbox"/> 36LED (40 Watts)		OTHER LED COLORS AVAILABLE CONSULT FACTORY	<input type="checkbox"/> 2-90	<input type="checkbox"/> DARK BRONZE RAL-8019-T	<input type="checkbox"/> POLYCARBONATE ...
	<input type="checkbox"/> VPA - SYM ...	RCGS22	RCGS18	VOLTAGE	<input type="checkbox"/> 3-90	<input type="checkbox"/> GREEN RAL-6005-T	<input type="checkbox"/> OPAL SMOOTH POLYCARBONATE ...
		<input type="checkbox"/> 64LED (72 Watts)	<input type="checkbox"/> 48LED (53 Watts)	<input type="checkbox"/> 120	<input type="checkbox"/> 3-120		<input type="checkbox"/> HOUSE SIDE SHIELD. . .
		<input type="checkbox"/> 48LED (53 Watts)	<input type="checkbox"/> 36LED (40 Watts)	<input type="checkbox"/> 208	<input type="checkbox"/> 4-90		<input type="checkbox"/> DIMMABLE DRIVER(S) (0-10V)
		<input type="checkbox"/> 36LED (40 Watts)		<input type="checkbox"/> 240			<input type="checkbox"/> HIGH-LOW DIMMING FOR HARDWIRED SWITCHING OR NON-INTEGRATED MOTION SENSOR
		<input type="checkbox"/> 36LED (40 Watts)	RCGS14	<input type="checkbox"/> 277	WALL MOUNT		<input type="checkbox"/> PHOTO CELL + VOLTAGE (EXAMPLE: PC120V) ...
		<input type="checkbox"/> 24LED (40 Watts)	<input type="checkbox"/> 36LED (40 Watts)	<input type="checkbox"/> 347	<input type="checkbox"/> WM		<input type="checkbox"/> 10KV SURGE PROTECTOR.
			<input type="checkbox"/> 24LED (40 Watts)	<input type="checkbox"/> 480	POST TOP		<input type="checkbox"/> 20KV SURGE PROTECTOR (277V & 480V Only)
					<input type="checkbox"/> PT		

FOR SMOOTH FINISH
REPLACE SUFFIX "T"
WITH SUFFIX "S"
(EXAMPLE: RAL-9500-S)

SEE USALTG.COM FOR
ADDITIONAL COLORS