

SOLID STATE AREA LIGHTING

RVL SERIES-LED SPECIFICATIONS

HOUSING

Heavy wall aluminum construction with integral domed top. Twin flutes have been formed into housing to add aesthetic value and to provide for multicolored bands to signaturize installation

ARM

3"X5"X6" long heavy wall extruded aluminum. Arm is secured to housing and to pole with stainless steel rods.

LED OPTICAL MODULE

Low copper A356 alloy (<.2% copper) cast aluminum housing. Integrated clear tempered 3/16" glass lens sealed with a continuous silicone gasket protects emitters (LED's) and emitter Reflector-Prism optics, and seals the module from water intrusion and environmental contaminants. LED's are available in standard Neutral White (4000K), or optional Cool White (5000K) or Warm White (3000K). Each emitter is optically controlled by a Reflector-Prism injection molded from H12 acrylic (3 types per module; one from 0° - 50°; one from 50° - 65°; one from 65° - 72°). Each Reflector-Prism has indexing pins for aiming and is secured to an optical plate made of matte black anodized aluminum. The optical plate locates every Reflector-Prism over an emitter. Reflector-Prisms are secured to the optical plate with a UV curing adhesive. The Reflector-Prisms are arrayed to produce IES Type II, III, IV, and V-SQ Distributions. The entire Optical Module is field rotatable in 90° increments. Both module and drivers are factory wired using water resistant, insulated cord. Lens, module and drivers are field replaceable.

LED EMITTERS

High Output LED's are driven at 350mA for nominal 1 Watt output each. LED's are available in standard Neutral White (4000K), or optional Cool White (5000K) or Warm White (3000K). Consult Factory for other LED options.

LED DRIVER

UL and CUL recognized High Power Factor, Constant Current LED drivers operate on input voltages from 120-277VAC, 50/60hz. Consult Factory for 347-480VAC. Driver is mechanically fastened to a retaining bracket. Main power quick disconnect provided. Driver has a minimum 4KV of internal surge protection, 10KV & 20KV Surge Protector optional. Dimming and High-Low Driver options available.

FINISH

Electrostatically applied TGIC Polyester Powder Coat on substrate prepared with 20 PSI power wash at 140°F. Four step iron phosphate pretreatment for protection and paint adhesion. 400°F bake for maximum hardness and durability. Texture finish is standard.

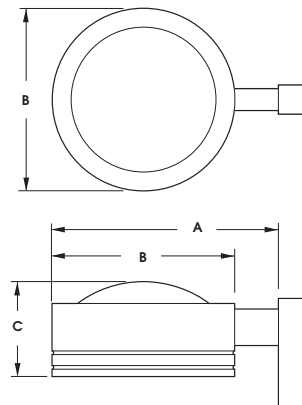
PROJECT NAME: _____

FIXTURE TYPE: _____



RVL

PATENT PENDING



FIXTURE	A	B	C
RVL18	24" 610mm	18" 457mm	11" 279mm
RVL25	31" 787mm	25" 635mm	13" 330mm

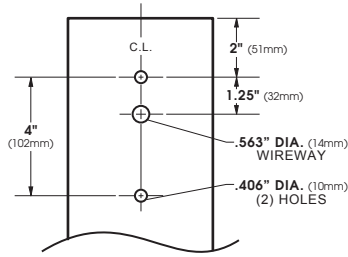


2013158

RVL SERIES - LED

S P E C I F I C A T I O N S

POLE DRILLING TEMPLATE



OVERVIEW

PRECISE CAST ALUMINUM LED MODULE. HOUSING IS VENTED TO PROVIDE AIR FLOW FOR THERMAL MANAGEMENT.

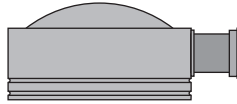
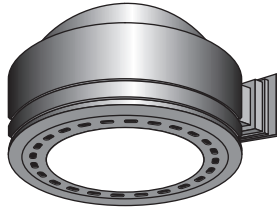
SELF CONTAINED, LENSED LED MODULE.

PROPRIETARY LED OPTICS SEALED IN LED MODULE.

LUXEON® REBEL LED EMITTERS.

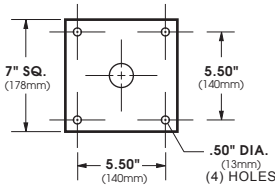
LED DRIVER ACCEPTS FROM 100-277 VAC INPUT VOLTAGE.

WALL MOUNT

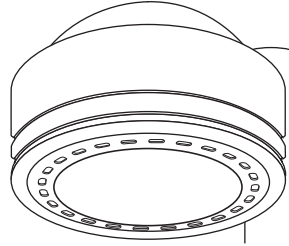


EXTRUDED ALUMINUM ARM AND CAST ALUMINUM WALL BRACKET ASSEMBLY PROVIDED WITH BUILT IN GASKETED WIRE ACCESS FOR FIXTURE/SUPPLY WIRE CONNECTION.

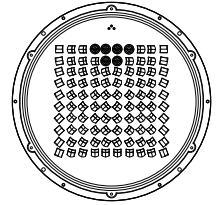
WALL PLATE



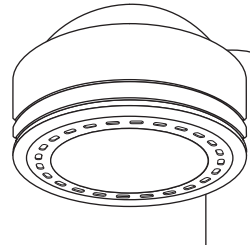
VLED® MODULES



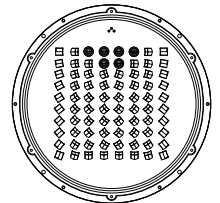
RVL25 E.P.A.= 1.65
Available in:
120, 100, 80 & 64 LED Module



120 LED Module



RVL18 E.P.A.= 1.05
Available in:
80, 64 & 48 LED Module



80 LED Module

O R D E R I N G I N F O R M A T I O N

LUMINAIRE	OPTICS	# of LED's	COLOR	VOLTAGE	MOUNTING	FINISH	OPTIONS
LUMINAIRE	OPTICS	LED		MOUNTING	FINISH	OPTIONS	
<input type="checkbox"/> RVL25	<input type="checkbox"/> VLED - II (Type-II)	RVL25	<input type="checkbox"/> NW (4000K)* *STANDARD	<input type="checkbox"/> 120	<input type="checkbox"/> 1	<input type="checkbox"/> BLACK RAL-9005-T	<input type="checkbox"/> INTERNAL HOUSE SIDE SHIELDS... HS
<input type="checkbox"/> RVL18	<input type="checkbox"/> VLED - III (Type-III)	<input type="checkbox"/> 120LED (132 Watts)	<input type="checkbox"/> CW (5000K)	<input type="checkbox"/> 208	<input type="checkbox"/> STREET LIGHTING ARM MOUNT	<input type="checkbox"/> WHITE RAL-9003-T	<input type="checkbox"/> EXTERNAL HOUSE SIDE SHIELD... EHS
	<input type="checkbox"/> VLED - IV (Type-IV)	<input type="checkbox"/> 100LED (110 Watts)	<input type="checkbox"/> WW (3000K)	<input type="checkbox"/> 240	<input type="checkbox"/> ST23 (TO FIT OVER 2 3/8" O.D. ARM)	<input type="checkbox"/> GREY RAL-7004-T	<input type="checkbox"/> DIMMABLE DRIVER(S) (0-10V)... DIM
	<input type="checkbox"/> VLED - VSQ (Type-VSQ)	<input type="checkbox"/> 80LED (89 Watts)	OTHER LED COLORS AVAILABLE CONSULT FACTORY	<input type="checkbox"/> 277	<input type="checkbox"/> ADJUSTABLE KNUCKLE	<input type="checkbox"/> DARK BRONZE RAL-8019-T	<input type="checkbox"/> HIGH-LOW DIMMING FOR HARDWIRED SWITCHING OR NON-INTEGRATED MOTION SENSOR... HLSW
		<input type="checkbox"/> 64LED (72 Watts)		<input type="checkbox"/> 347	<input type="checkbox"/> NKLE23 (TO FIT OVER 2 3/8" O.D.)	<input type="checkbox"/> GREEN RAL-6005-T	<input type="checkbox"/> PHOTO CELL + VOLTAGE (EXAMPLE: PC120V)... PC+V
		RVL18		<input type="checkbox"/> 480	<input type="checkbox"/> NKLE27 (TO FIT OVER 2 7/8" O.D.)	FOR SMOOTH FINISH REMOVE SUFFIX "T" (EXAMPLE: RAL-9500)	<input type="checkbox"/> TWIST LOCK PHOTOCELL +VOLTAGE... TPC+V
		<input type="checkbox"/> 80LED (89 Watts)			<input type="checkbox"/> WALL MOUNT	SEE USALTG.COM FOR ADDITIONAL COLORS	<input type="checkbox"/> TWIST LOCK PHOTOCELL RECEPTACLE ONLY... TPR
		<input type="checkbox"/> 64LED (72 Watts)			<input type="checkbox"/> WM		<input type="checkbox"/> 10KV SURGE PROTECTOR... 10SP
		<input type="checkbox"/> 48LED (53 Watts)					<input type="checkbox"/> 20KV SURGE PROTECTOR (277V & 480V Only)... 20SP
		Wattages are Max. Input Watts					