

# H.I.D. AREA LIGHTING

## RVL SERIES-HID

### S P E C I F I C A T I O N S

#### HOUSING and ARM

Heavy wall spun aluminum construction with integral domed top. Twin flutes have been integrated with housing to add rigidity to the housing, add aesthetic value and to provide for multi-colored bands. A 3"x5"x6" long heavy wall extruded aluminum arm is secured to housing and to pole with stainless steel rods.

#### LENS ASSEMBLY

One piece hinged heavy gauge die formed aluminum door frame surrounds 3/16" clear tempered convex or flat glass lens. Glass is sealed to door with high temperature silicone seal. Captive thumb screw disengages lens assembly and activates Accuhinge™ hinge to allow lens assembly to hinge away from housing for luminaire access without the use of tools

#### OPTICAL MODULE

Lens is 3/16" tempered convex glass or flat glass. Specular Alzak® optical segments rigidly mounted in an aluminum frame, which attaches to the housing as a one piece module. Reflector module is field rotatable in 90° increments and may be rotated or removed without the use of tools. Reflector modules are factory prewired with a quick-disconnect plug. Sockets are porcelain 4KV pulse rated (5KV for 1000w HPS models), medium base (E26) for 50W - 175W or bi-pin (G12) for 70W and 150W; mogul base (E39) for 200W - 1000W, extended mogul base (EX39) for 775w. Special for 210W and 315W CDM Elite lamp base is PGZ18. Lamp is vertically mounted.

#### ELECTRICAL COMPONENTS

All electrical components are UL and cUL recognized mounted on a single plate and factory prewired with quick-disconnect plugs. Electrical module attaches to housing with no-tool hinges and latches, accessible by opening the lens frame. Electronic MH ballasts have power factor of >.95 (70W - 150W) -20°F starting, 120-277V; or >.90 (250W - 400W), -20°F starting, 200-277V, 50Hz/60Hz and have lamp End-of-life protection. 347V option utilizes a step down transformer to the electronic ballast. Special for Philips MasterColor CDM Elite: Electronic MH ballast has a power factor of >.90 (210W & 315W), -4°F starting, 200 - 277V, 50Hz/60Hz and has lamp End-of-life protection. All higher wattage (315W - 400W) electronic MH ballasts have 0 - 10V dimming capability. Magnetic MH ballasts are high power factor (70W - 150W, 575W) or CWA (200W - 1000W, excluding 575W), -20°F starting, multi-tap 120-277V or 480V, 60Hz. All HPS ballasts are core and coil, high-reactance, high power factor (70W - 150W) or CWA (200W - 1000W), -40°F starting.

#### FINISH

Electrostatically applied TGIC Polyester Powder Coat on substrate prepared with 20 PSI power wash at 140° F. Four step iron phosphate pretreatment for protection and paint adhesion. 400°F bake for maximum hardness and durability. Texture finish is standard.

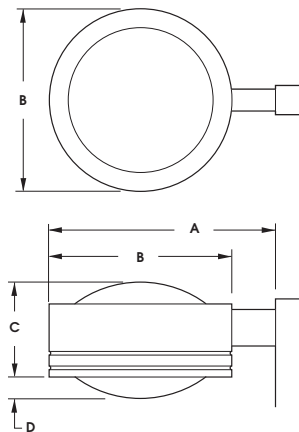
PROJECT NAME: \_\_\_\_\_

FIXTURE TYPE: \_\_\_\_\_



RVL

PATENT PENDING



FIXTURE	A	B	C	D
RVL29	35" 889mm	29" Dia. 737mm	15" 381mm	3.5" 89mm
RVL25	31" 787mm	25" Dia. 635mm	13" 330mm	2.5" 64mm
RVL18	24" 610mm	18" Dia. 457mm	11" 279mm	2.5" 64mm

 Light Pollution Control Classification System  
Full cutoff 0% Uplight Luminaire

 U.L. Listed for wet location

MADE IN THE  


2015075

U.S. Architectural Lighting

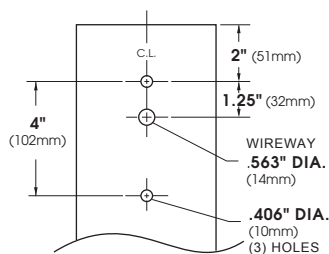
660 West Avenue O, Palmdale, CA 93551  
Phone (661) 233-2000 Fax (661) 233-2001  
www.usallg.com



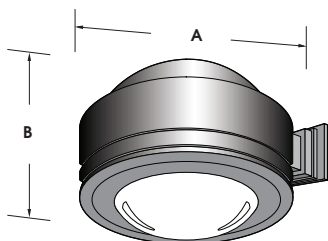
# RVL SERIES - HID

## S P E C I F I C A T I O N S

### POLE DRILLING TEMPLATE



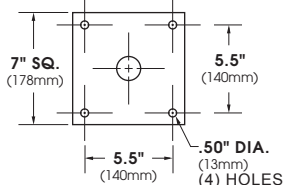
### WALL MOUNT



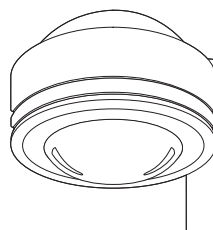
	RVL29	RVL25	RVL18
<b>A</b>	37" 940mm	33" 838mm	26" 660mm
<b>B</b>	18.5" 470mm	15.5" 394mm	13.5" 343mm

ARM BRACKET EXTRUDED AND CAST ALUMINUM CONSTRUCTION.

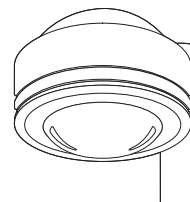
### WALL PLATE



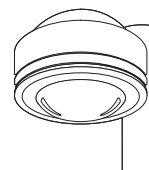
### E.P.A. & LAMP WATTAGE



**RVL29**  
E.P.A. = 2.37  
LAMP SIZE: 450 - 1000 WATT



**RVL25**  
E.P.A. = 1.85  
LAMP SIZE: 200 - 450 WATT



**RVL18**  
E.P.A. = 1.24  
LAMP SIZE: 50 - 175 WATT

Spec/Order Example: RVL25-HR-V-SQ/400HPS208/2-90/RAL-9005-T

## S P E C / O R D E R I N G I N F O R M A T I O N

MODEL	OPTICS	WATTAGE	TYPE	VOLTAGE	MOUNTING	FINISH	OPTIONS
<b>MODEL</b>	<b>OPTICS</b>	<b>LAMP</b>			<b>MOUNTING</b>	<b>FINISH</b>	<b>OPTIONS</b>
STANDARD COVEX LENS	VERTICAL LAMP REFLECTOR	WATTAGE	TYPE	VOLTAGE	ARM MOUNT	STANDARD TEXTURED FINISH	
<input type="checkbox"/> RVL29	<input type="checkbox"/> TYPE III VR - ASY (FORWARD THROW)	<input type="checkbox"/> 1000 <sup>4</sup>	<input type="checkbox"/> PSMH	<input type="checkbox"/> 120	<input type="checkbox"/> 1	<input type="checkbox"/> BLACK RAL-9005-T	HOUSE SIDE SHIELD <input type="checkbox"/> 90 ... HS 90° <input type="checkbox"/> 135 ... HS 135° <input type="checkbox"/> 180 ... HS 180°
	<input type="checkbox"/> TYPE IV VR - I V (FORWARD THROW)	<input type="checkbox"/> 875 <sup>4</sup>	<input type="checkbox"/> HPS	<input type="checkbox"/> 208	<input type="checkbox"/> 2-180	<input type="checkbox"/> WHITE RAL-9003-T	<input type="checkbox"/> PHOTO CELL + VOLTAGE (EXAMPLE: PC120V) ... PC+V
	<input type="checkbox"/> TYPE V-SQ VR - V - SQ	<input type="checkbox"/> 775 <sup>4,7</sup>		<input type="checkbox"/> 240	<input type="checkbox"/> 2-90	<input type="checkbox"/> GREY RAL-7004-T	<input type="checkbox"/> SINGLE FUSE (120V, 277V) ... SF
<input type="checkbox"/> RVL25		<input type="checkbox"/> 750 <sup>4</sup>		<input type="checkbox"/> 277	<input type="checkbox"/> 3-90	<input type="checkbox"/> DARK BRONZE RAL-8019-T	<input type="checkbox"/> DOUBLE FUSE (208V, 240V, 480V) ... DF
		<input type="checkbox"/> 600 <sup>3,4</sup>		<input type="checkbox"/> 347	<input type="checkbox"/> 3-120	<input type="checkbox"/> GREEN RAL-6005-T	<input type="checkbox"/> HIGH-LOW DIMMING FOR HARDWIRED SWITCHING OR NON-INTEGRATED MOTION SENSOR ... HLSW
		<input type="checkbox"/> 575		<input type="checkbox"/> 480	<input type="checkbox"/> 4-90		<input type="checkbox"/> FLAT GLASS ... FG (SEE LAMP FOOTNOTES FOR COMPATIBLE BULB SIZES)
		<input type="checkbox"/> 450			WALL MOUNT	FOR SMOOTH FINISH REPLACE SUFFIX "T" WITH SUFFIX "S" (EXAMPLE: RAL-9500-S)	
<input type="checkbox"/> RVL18		<input type="checkbox"/> E <sup>8</sup> (ELECTRONIC)			<input type="checkbox"/> WM	SEE USALTG.COM FOR ADDITIONAL COLORS	
		<input type="checkbox"/> 450 <sup>2</sup>			POLE TOP		
		<input type="checkbox"/> 400 <sup>1</sup>			<input type="checkbox"/> PT		
		<input type="checkbox"/> 350					
		<input type="checkbox"/> 320					
		<input type="checkbox"/> 315 <sup>5</sup>					
		<input type="checkbox"/> 250					
		<input type="checkbox"/> 210 <sup>6</sup>					
		<input type="checkbox"/> 200					
		<input type="checkbox"/> E <sup>8</sup> (ELECTRONIC)					
		<input type="checkbox"/> 175					
		<input type="checkbox"/> 150T <sup>5</sup>					
		<input type="checkbox"/> 150					
		<input type="checkbox"/> 100					
		<input type="checkbox"/> 75					
		<input type="checkbox"/> 70T <sup>5</sup>					
		<input type="checkbox"/> 70					
		<input type="checkbox"/> 50T <sup>5</sup>					
		<input type="checkbox"/> 50					
		<input type="checkbox"/> E <sup>8</sup> (ELECTRONIC)					

NOTES:  
1 - USE ED28 FOR "FG" OPTION  
2 - "FG" N/A IN RVL25  
3 - HPS ONLY  
4 - USE ED37 FOR "FG" OPTION  
5 - G12 BASE  
6 - PG218 BASE  
7 - EX39 BASE  
8 - E-BALLASTS AVAILABLE FOR 315W AND BELOW

FOR FLAT GLASS USE "FG" SELECTION IN OPTIONS COLUMN