

T S U N A M I S E R I E S

S P E C I F I C A T I O N S

HOUSING

Precise heavy wall low copper cast aluminum with integral cooling ribs surrounding the electrical compartment. The optical and electrical compartments are integrated with the support arm to create one assembly. Minimum wall thickness is 1/4". Cast and hinged ballast compartment cover is integrated with wiring compartment cover.

LENS FRAME

Precise one piece cast aluminum lens frame minimum 5/8" cross section for rigidity with Integral stainless steel hinge. Tool-less push and turn latch provides positive locking and sealing of the optical chamber by a one piece extruded silicone EPDM gasket fused to form a continuous loop. Clear 3/16" tempered glass lens retained by eight stainless steel clips with full silicone gasketing around the perimeter.

REFLECTOR MODULE

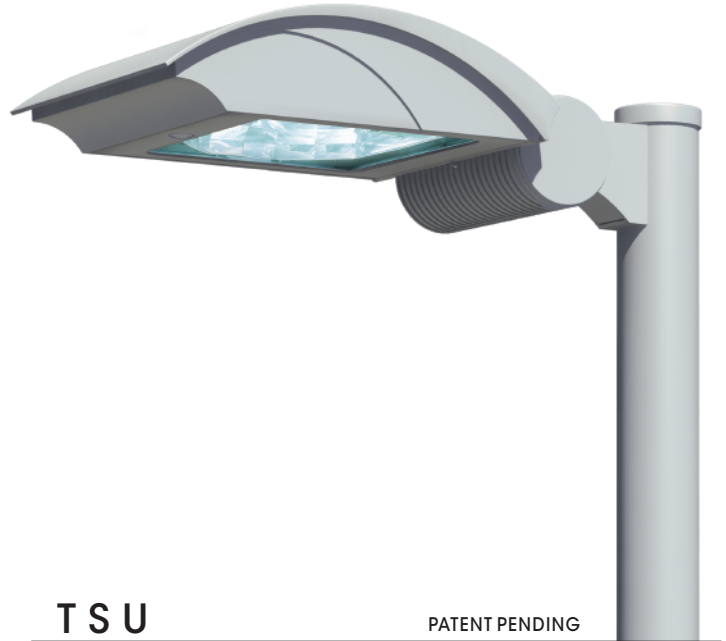
Specular Alzak® optical segments rigidly mounted in an aluminum frame, attaches to the housing to form a one piece module. Reflector module is field rotatable in 90° increments. All sockets are porcelain 4KV pulse rated, pin-oriented mogul (TSU) or medium based (TSUM). Reflector modules are factory prewired with quick-disconnect plug.

ELECTRICAL MODULE

Electrical module attaches to housing with no-tool hinges and latches, accessible by opening the electrical compartment cover. Standard electronic MH ballasts have power factor of >.95 (70W - 150W) -20°F starting, 120-277V or >.90 (250W - 400W), -20°F starting, 200-277V, 50Hz/60Hz and have lamp End-of-life protection. 347V option utilizes a step down transformer to the electronic ballast. Special for Philips MasterColor CDM Elite: Electronic MH ballast has a power factor of >.90 (210W & 315W), -4°F starting, 200 - 277V, 50Hz/60Hz and has lamp End-of-life protection. All higher wattage (315W - 400W) electronic MH ballasts have 0 - 10V dimming capability. Magnetic MH ballasts are high power factor (70W - 150W) or CWA (250W - 400W), -20°F starting, multi-tap 120-277V, 60Hz. All HPS ballasts are core and coil, high-reactance, high power factor (70W - 150W) or CWA (200W - 400W), -40°F starting.

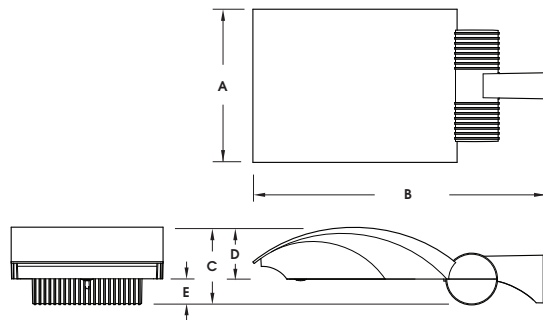
FINISH

Polyester powder coat. (Specify color.)

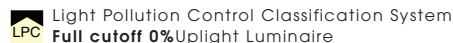


TSU

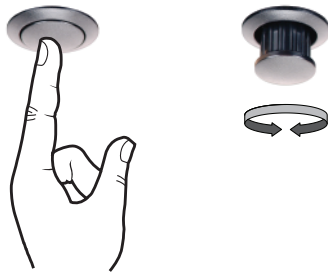
PATENT PENDING



FIXTURE	A	B	C	D	E
TSUNAMI TSU	19" 4852.6mm	37" 939.8mm	9.75" 247.65mm	6.5" 165.1mm	3.25" 82.55mm
TSUNAMI -MINI TSUM	15" 381mm	28" 711.2mm	7.875" 200.025mm	5.25" 133.35mm	2.625" 66.675mm

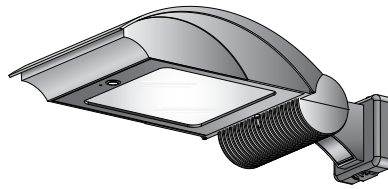


TOOL-LESS LATCH



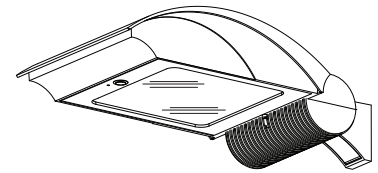
ACCESS TO THE LAMP COMPARTMENT IS ACHIEVED BY A SINGLE 2-STAGE BUTTON LATCH.

WALL MOUNT



EXTRUDED ALUMINUM ARM AND CAST ALUMINUM WALL BRACKET ASSEMBLY PROVIDED WITH BUILT IN GASKETED WIRE ACCESS FOR FIXTURE/SUPPLY WIRE CONNECTION.

LUMINAIRE



TSUNAMI
TSU
400 W. MAX.
TSU ASS'Y E.P.A. = 1.53

TSUNAMI -MINI
TSUM
150 W. MAX.
TSUM ASS'Y E.P.A. = .96

PRECISE CAST ALUMINUM HOUSING AND DOOR FRAME.

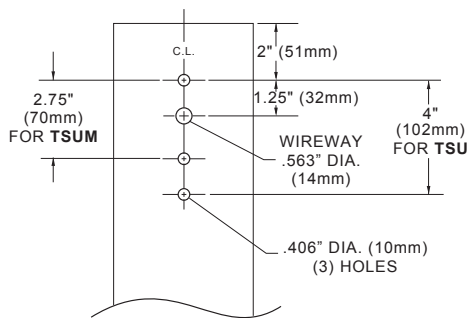
OPTICAL SYSTEM ENCLOSED IN IMPACT RESISTANT TEMPERED GLASS LENS.

REFLECTOR IS ENTIRELY FIELD ROTATABLE.

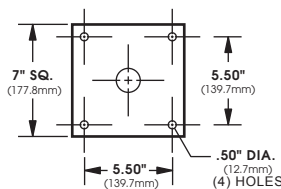
BALLAST TRAY IS REMOVABLE WITHOUT THE USE OF TOOLS FOR EASY ACCESS TO ELECTRICAL COMPONENTS.

Patent Pending

STANDARD ARM DRILLING TEMPLATE



WALL PLATE



ORDERING INFORMATION

MODEL NO.: STM	OPTICS	LAMP	MOUNTING	FINISH	OPTIONS
MODEL NO.:	OPTICS	LAMP MODE	MOUNTING	FINISH	OPTIONS
MODEL		WATTS TYPE VOLTS	ARM MOUNT	STANDARD TEXTURED FINISH	
<input type="checkbox"/> TSU Tsunami	<input type="checkbox"/> TYPE II II (segmented)	TSU Mogul Base/ E Lamp <input type="checkbox"/> 400 <input type="checkbox"/> PSMH <input type="checkbox"/> 120 <input type="checkbox"/> 350 <input type="checkbox"/> 208 <input type="checkbox"/> 320 <input type="checkbox"/> 240 <input type="checkbox"/> 250 <input type="checkbox"/> 277 <input type="checkbox"/> 480	<input type="checkbox"/> 1 <input type="checkbox"/> 2-180 <input type="checkbox"/> 2-90 <input type="checkbox"/> 3-90 <input type="checkbox"/> 4-90 <input type="checkbox"/> 3-120	<input type="checkbox"/> BLACK RAL-9005-T <input type="checkbox"/> WHITE RAL-9003-T <input type="checkbox"/> GREY RAL-7004-T <input type="checkbox"/> DARK BRONZE RAL-8019-T <input type="checkbox"/> GREEN RAL-6005-T	<input type="checkbox"/> EXTERNAL HOUSE SIDE SHIELD HS <input type="checkbox"/> PHOTO CELL + VOLTAGE (EXAMPLE: PC120V) ... PC+V <input type="checkbox"/> TWIST LOCK PHOTO CELL+VOLTAGE (EXAMPLE TPC120V) ... TPC+V <input type="checkbox"/> TWIST LOCK RECEPTACLE ONLY TPR <input type="checkbox"/> SINGLE FUSE (120V., 277V) SF <input type="checkbox"/> QUARTZ RESTRIKE. QTZ
<input type="checkbox"/> TSUM Tsunami Mini	<input type="checkbox"/> TYPE III III (segmented) <input type="checkbox"/> TYPE IV (FORWARD THROW) IV (segmented) <input type="checkbox"/> TYPE V V-SQ (segmented)	<input type="checkbox"/> 400 <input type="checkbox"/> HPS <input type="checkbox"/> 250 PGZ Base/ T Lamp <input type="checkbox"/> 315 <input type="checkbox"/> PSMH <input type="checkbox"/> 120 <input type="checkbox"/> 210 <input type="checkbox"/> 208 <input type="checkbox"/> 240 <input type="checkbox"/> 277 <input type="checkbox"/> 480 TSUM Medium Base/ E Lamp <input type="checkbox"/> 150 <input type="checkbox"/> PSMH <input type="checkbox"/> 120 <input type="checkbox"/> 100 <input type="checkbox"/> HPS <input type="checkbox"/> 208 <input type="checkbox"/> 70 <input type="checkbox"/> 240 <input type="checkbox"/> 277 <input type="checkbox"/> 480 G Base/ T Lamp <input type="checkbox"/> 150 <input type="checkbox"/> PSMH <input type="checkbox"/> 120 <input type="checkbox"/> 70 <input type="checkbox"/> 208 <input type="checkbox"/> 39 <input type="checkbox"/> 240 <input type="checkbox"/> 277	<input type="checkbox"/> WM	FOR SMOOTH FINISH REMOVE SUFFIX "T" (EXAMPLE: RAL-9500) LATCH COLOR <input type="checkbox"/> CHROME LC <input type="checkbox"/> BLACK LB	