

SOLID STATE AREA LIGHTING

VNDL SERIES-LED

SPECIFICATIONS

LUMINAIRE

One piece high impact polycarbonate prismatic refracting lens provided with durable corrosion resistant cast aluminum fitter, struts, and top. Top is hinged for access. Standard fitter has 3" I.D. opening for tenon. All hardware is stainless steel.

LED POWER ARRAY™

Three-dimensional array of individual LED Tubes fastened to a retaining plate. Each LED Tube consists of circuit board populated with a multiple of LED's and is mechanically fastened to a radial aluminum heat sink. An acrylic Lens and end cap protects the LED Tube's internal components.

VERTICAL POWER ARRAY™ WITH REFRACTING

LENS: LED Tubes are aligned vertically and arranged radially to produce an even raw light distribution that simulates standard light sources. Used in conjunction with the external refracting lens which provides the optical control.

LED EMITTERS

High Output LED's are driven at 350mA for nominal 1 Watt output each. LED's are available in standard Neutral White (4000K), or optional Cool White (5000K) or Warm White (3000K). Consult Factory for other LED options.

LED DRIVER

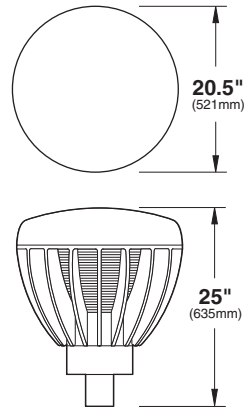
UL and CUL recognized Constant Current LED drivers operate on input voltages from 120-277VAC, 50/60hz. Consult Factory for (347-480VAC). Driver is mechanically fastened to a retaining bracket. Main power quick disconnect provided. Driver has a minimum 4KV of internal surge protection, 10KV & 20KV Surge Protector optional. Dimmable and High-Low Driver options available.

FINISH

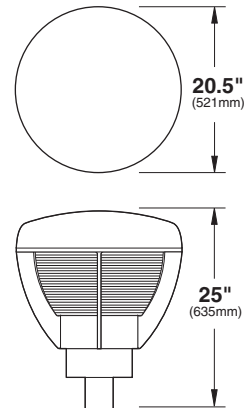
Polyester powder coat incorporates four step iron phosphate process to pretreat metal surface for maximum adhesion. Top coat is baked at 400°F for maximum hardness and exterior durability.

PROJECT NAME: _____

PROJECT TYPE: _____



PATENT PENDING



PATENT PENDING

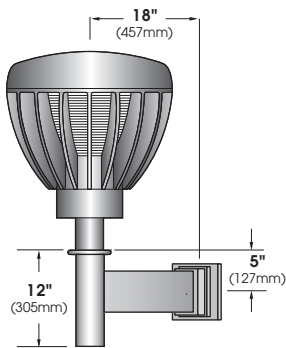


2013142

VNDL SERIES - LED

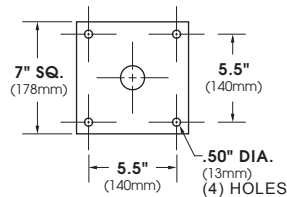
S P E C I F I C A T I O N S

WALL MOUNT

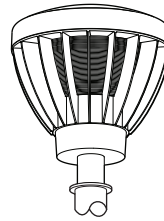


EXTRUDED ALUMINUM ARM BRACKET AND CAST ALUMINUM WALL BRACKET ASSEMBLY PROVIDED WITH BUILT IN GASKETED WIRE ACCESS FOR FIXTURE/SUPPLY WIRE CONNECTION.

WALL PLATE



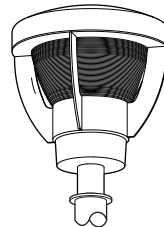
LED POWER ARRAY™ MODULES



VNDL-LED

E.P.A. = 1.78

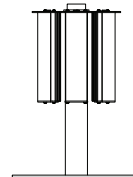
Available in:
10 Array 80LED Max.



VNDLF-LED

E.P.A. = 1.78

Available in:
10 Array 80LED Max.



VPA - Vertical Array

(Specifications subject to change without prior notice.)

PATENT PENDING

O R D E R I N G I N F O R M A T I O N

LUMINAIRE-FITTER	OPTICS	# of LED's	COLOR	VOLTAGE	MOUNTING	FINISH	OPTIONS
LUMINAIRE	OPTICS	LED			MOUNTING	FINISH	OPTIONS
LUMINAIRE-FITTER	VERTICAL POWER ARRAY (CLEAR PRISMATIC LENS)	# of LEDs	COLOR	VOLTAGE	ARM MOUNT	STANDARD TEXTURED FINISH	LENS OPTIONS:
<input type="checkbox"/> VNDL-LED <input type="checkbox"/> VNDLF-LED	<input type="checkbox"/> VPA - II <input type="checkbox"/> VPA - V	<input type="checkbox"/> 80LED (90 Watts) <input type="checkbox"/> 64LED (71 Watts) <input type="checkbox"/> 48LED (53 Watts) <input type="checkbox"/> 36LED (41 Watts)	<input type="checkbox"/> NW (4000K)* *STANDARD <input type="checkbox"/> CW (5000K) <input type="checkbox"/> WW (3000K)	<input type="checkbox"/> 120 <input type="checkbox"/> 208 <input type="checkbox"/> 240 <input type="checkbox"/> 277 <input type="checkbox"/> 347 <input type="checkbox"/> 480	<input type="checkbox"/> 1 <input type="checkbox"/> 2-180 <input type="checkbox"/> 2-90 <input type="checkbox"/> 3-90 <input type="checkbox"/> 3-120 <input type="checkbox"/> 4-90 WALL MOUNT <input type="checkbox"/> WM POST TOP <input type="checkbox"/> PT	<input type="checkbox"/> BLACK RAL-9005-T <input type="checkbox"/> WHITE RAL-9003-T <input type="checkbox"/> GREY RAL-7004-T <input type="checkbox"/> DARK BRONZE RAL-8019-T <input type="checkbox"/> GREEN RAL-6005-T	<input type="checkbox"/> CLEAR PRISMATIC POLYCARBONATE ... CP (STANDARD GLOBE) <input type="checkbox"/> CLEAR PRISMATIC ACRYLIC CA <input type="checkbox"/> HOUSE SIDE SHIELD... HS <input type="checkbox"/> DIMMABLE DRIVER(S) (0-10V)..... DIM <input type="checkbox"/> HIGH-LOW DIMMING FOR HARDWIRED SWITCHING OR NON-INTEGRATED MOTION SENSOR HLSW <input type="checkbox"/> PHOTO CELL + VOLTAGE (EXAMPLE: PC120V) PC+V <input type="checkbox"/> 10KV SURGE PROTECTOR..... 10SP <input type="checkbox"/> 20KV SURGE PROTECTOR (277V & 480V Only) 20SP
		Wattages are Max Input Watts	OTHER LED COLORS AVAILABLE CONSULT FACTORY		FOR SMOOTH FINISH REMOVE SUFFIX "T" (EXAMPLE: RAL-9500)	SEE USALTG.COM FOR ADDITIONAL COLORS	