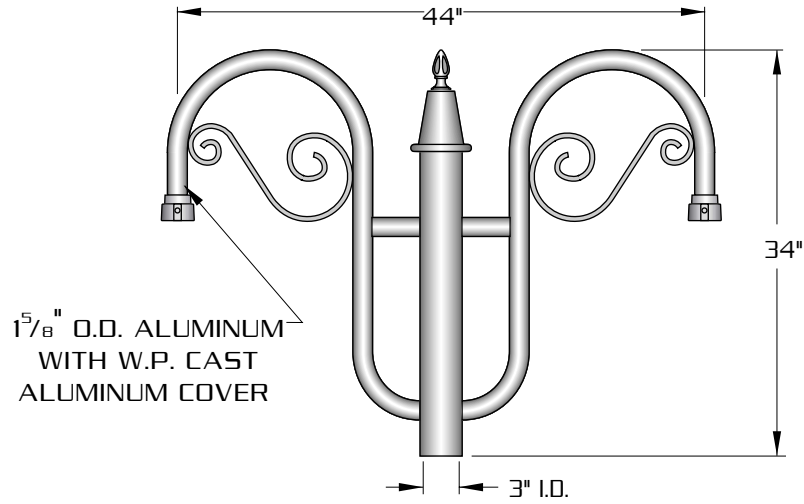
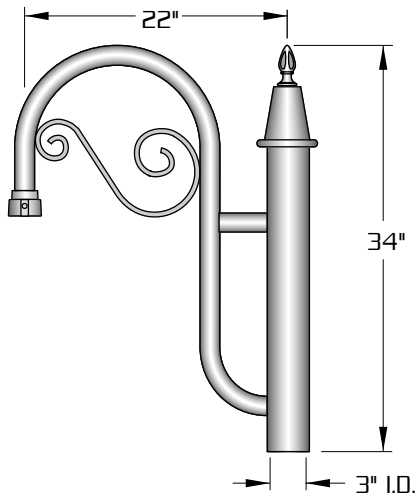


SCALE: 3/4"=1'-0"

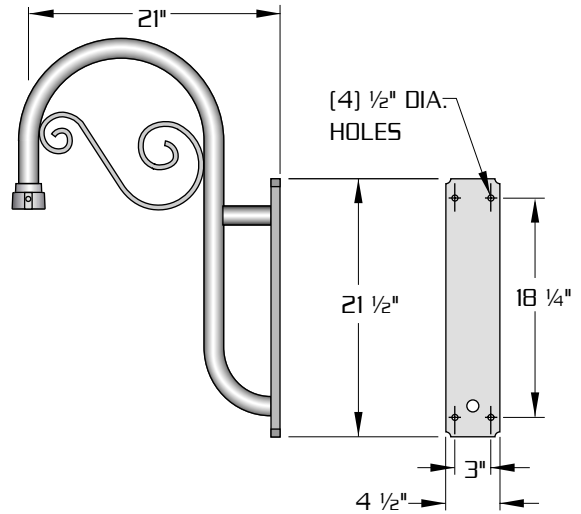


E.P.A.= 1.80

**XPR-2-180**  
E.P.A.= 1.80



**XPR-1**  
E.P.A.= 1.18



**XPJ-WM**



**DURABLE CORROSION RESISTANT, CAST AND EXTRUDED ALUMINUM CONSTRUCTION.**