

PATHSCAPE-700

AREA, PATH, AND BED LUMINAIRE

SPECIFICATIONS

CONSTRUCTION:

Die-Cast Solid Brass Housing. Extruded Brass Riser Stem. Spun Brass Shade. Housing, Stem, and Lens are Gasketed to an IP66 Ingress Standard of the Lamp Chamber. Stem has 1/2" IPS Thread at Base.

FINISH:

Aged Brass Finish (AB) is a Patina Process Giving the Raw Brass Components a Time-Weathered Look and is Enhanced with UV-Stabilizers for a Long Lasting Look with Superior Corrosion Resistance and Durability.

Black Finish (BLK) is a Two Stage Finish on the Raw Brass Components. A High-Adhesion Primer is Applied over the Raw Brass. The Black Coat is Applied over the Primer and Contains UV-Stabilizers Resulting in an Extremely Durable, Long Lasting, Fade Resistant Coating that is Superior To Ordinary Powdercoats.

Underside Of Reflector is finished with a White Coating for Increased Light Reflectance and Diffusion.

LENS:

Clear Frosted UV-Stabilized Polycarbonate for Light Diffusion. Lens Is Shielded From View Above 90° By Housing. Optional Clear Lens Included. Lens is Gasketed to Housing and Stem.

STEM AND LAMP SOCKET:

G4 Bi-Pin Spring Loaded Ceramic with Lamp Clips. Lamp Socket Integrated Into Stem. Socket is Factory Wired and comes with Dual Lead Pass Through Wiring.

LAMP:

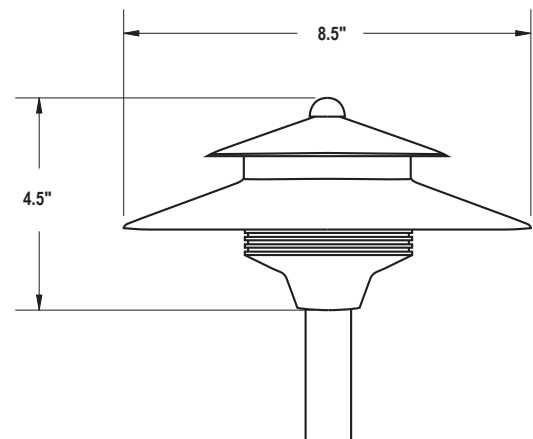
LED G4 Bi-Pin 8-12 VDC. Operates From -20° to 50°C. Lamp is 2700K CCT, 80 CRI and has a Lifetime > 25,000 Hours. Lamp is available in 2.5 Watt - 200 lm, 3.0 Watt - 250 lm, and 3.5 Watt -350lm

WARRANTY:

Lifetime Housing Warranty.

Certifications:

Complies with the requirements of UL-1838 and CAN/CSA-C22.2 No. 250.7. Identified with the ETL & cETL Listed Mark

**PTSC-700**
Aged Brass**PTSC-700**
Black Coating**Weight: 3.0lbs**

2025174

ORDERING

Ordering Example: PTSC700-AB-3.0WG4-ALSTEM24AB-STAKEP2AB

Luminaire	Finish	Lamp	Stem	Options
Luminaire	Finish	Lamp	Stem	Options
PTSC700	<input type="checkbox"/> AB - Aged Brass <input type="checkbox"/> BLK - Black	<input type="checkbox"/> 2.5WG4 (200lm-2700K) <input type="checkbox"/> 3.0WG4 (250lm-2700K) <input type="checkbox"/> 3.5WG4 (300lm-2700K)	<input type="checkbox"/> ALSTEM12AB (12" Aged Brass) <input type="checkbox"/> ALSTEM18AB (18" Aged Brass) <input type="checkbox"/> ALSTEM24AB (24" Aged Brass) <input type="checkbox"/> ALSTEM12BLK (12" Black) <input type="checkbox"/> ALSTEM18BLK (18" Black) <input type="checkbox"/> ALSTEM24BLK (24" Black) Consult Factory For Custom Stem Heights	<input type="checkbox"/> STKP1AB (8" Stake Brass) <input type="checkbox"/> STKP2AB (8.5" Stake Brass) <input type="checkbox"/> STKP3AB (14" Stake Brass) <input type="checkbox"/> STKP1BLK (8" Stake Black) <input type="checkbox"/> STKP2BLK (8.5" Stake Black) <input type="checkbox"/> STKP3BLK (14" Stake Black) <input type="checkbox"/> PRM (Heavy Traffic Fined Post) <input type="checkbox"/> RMBAB (3" Round Mounting Base - Aged Brass) <input type="checkbox"/> RMBBLK (3" Round Mounting Base - Black)

OPTIONS & ACCESSORIES



G4 Bi-Pin LED Lamp
 8-14 Volts, 2700K 80CRI
 2.5 Watt-200lm
 3.0 Watt-250lm
 3.5 Watt-300lm



ALSTEM Extruded Brass with Integrated Socket and Pass Through Wiring. Aged Brass Or Black.

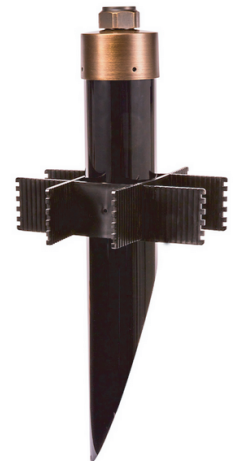


P1 (8") P2 (8.5") P3 (14")

SLOTTED GROUND STAKES (STK)
 Plastic Ground Stakes With Wiring Slots and 1/2" NPT Threading. Aged Brass Or Black.

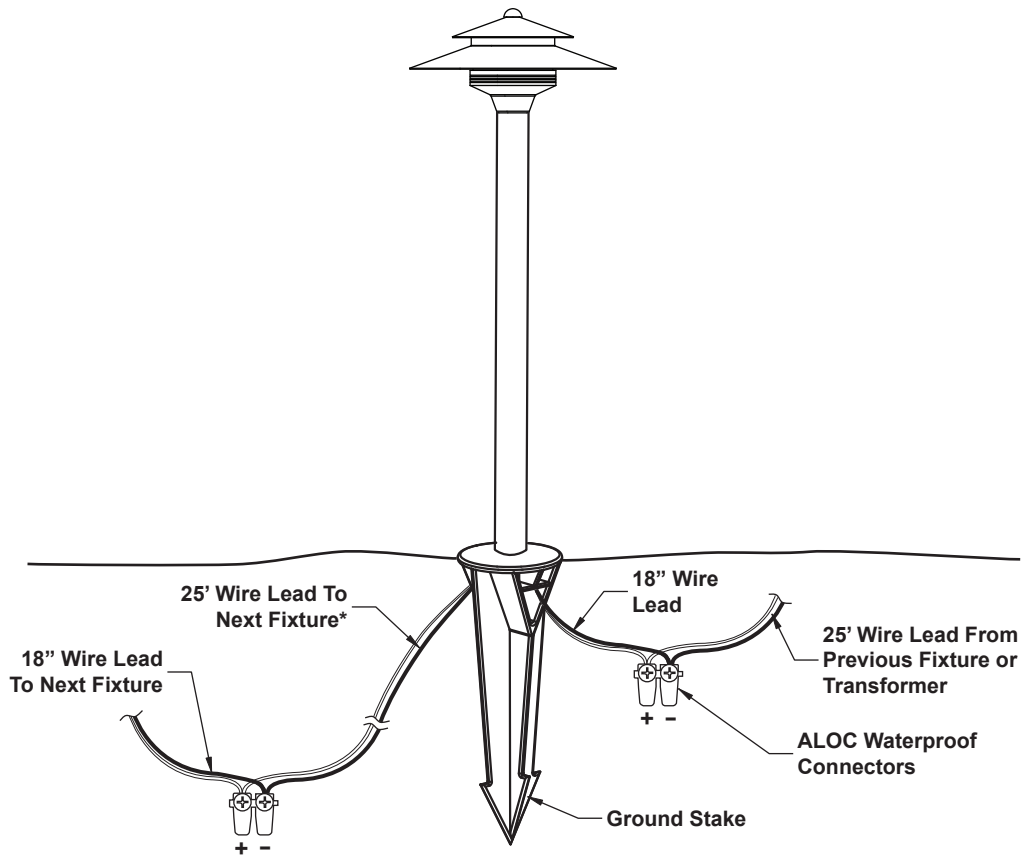


RMB 3" Dia. Brass Mounting Base with 1/2" NPT Thread and Wireway. Mounts to Flat Surfaces. 3" Wood Screws Included.



PERMAPOST (PRM) Heavy Duty Mounting Stake for Deep Anchoring in High Traffic Areas and/or Longer Mounting Stems. 18.5" Long with 3" Dia. PVC Body. 9" Wide Stabilizing Fins and Locking Brass Cap.

INSTALLATION (12 Volt In-Grade)



*Terminate And Cap Leads if Last Fixture On Run