

PATHSCAPE-800

AREA, PATH, AND BED LUMINAIRE

CONSTRUCTION:

Die-Cast Solid Brass Housing. Extruded Brass Riser Stem. Spun Brass Shade. Housing, Stem, and Lens are Gasketed to an IP66 Ingress Standard of the Lamp Chamber. Stem has 1/2" IPS Thread at Base.

FINISH:

Aged Brass Finish (AB) is a Patina Process Giving the Raw Brass Components a Time-Weathered Look and is Enhanced with UV-Stabilizers for a Long Lasting Look with Superior Corrosion Resistance and Durability.

Black Finish (BLK) is a Two Stage Finish on the Raw Brass Components. A High-Adhesion Primer is Applied over the Raw Brass. The Black Coat is Applied over the Primer and Contains UV-Stabilizers Resulting in an Extremely Durable, Long Lasting, Fade Resistant Coating that is Superior To Ordinary Powdercoats.

Underside Of Reflector is finished with a White Coating for Increased Light Reflectance and Diffusion.

LENS:

Clear Frosted UV-Stabilized Polycarbonate for Light Diffusion. Lens is Shielded From View Above 90° By Housing. Optional Clear Lens Included. Lens is Gasketed to Housing and Stem.

STEM AND LAMP SOCKET:

G4 Bi-Pin Spring Loaded Ceramic with Lamp Clips. Lamp Socket Integrated Into Stem. Socket is Factory Wired and comes with Dual Lead Pass Through Wiring.

LAMP:

LED G4 Bi-Pin 8-12 VDC. Operates From -20° to 50°C. Lamp is 2700K CCT, 80 CRI and has a Lifetime > 25,000 Hours. Lamp is available in 2.5 Watt - 200 lm, 3.0 Watt - 250 lm, and 3.5 Watt -350lm

WARRANTY:

Lifetime Housing Warranty.

Certifications:

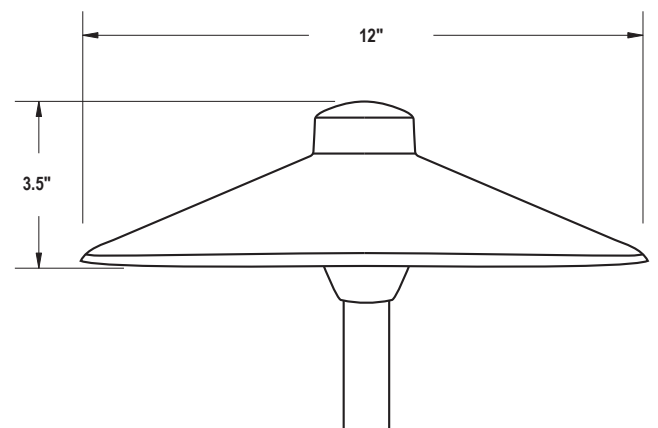
Complies with the requirements of UL-1838 and CAN/CSA-C22.2 No. 250.7. Identified with the ETL & cETL Listed Mark



PSC-800
Aged Brass



PSC-800
Black Coating



Weight: 2.86lbs

ORDERING

Ordering Example: PSC800-AB-3.0WG4-PTS24AB-STAKEP2AB

Luminaire	Finish	Lamp	Stem	Options
Luminaire	Finish	Lamp	Stem	Options
PSC800	<input type="checkbox"/> AB - Aged Brass <input type="checkbox"/> BLK - Black	<input type="checkbox"/> 2.5WG4 (200lm-2700K) <input type="checkbox"/> 3.0WG4 (250lm-2700K) <input type="checkbox"/> 3.5WG4 (300lm-2700K)	<input type="checkbox"/> PTS12AB (12" Aged Brass) <input type="checkbox"/> PTS18AB (18" Aged Brass) <input type="checkbox"/> PTS24AB (24" Aged Brass) <input type="checkbox"/> PTS12BLK (12" Black) Brass) <input type="checkbox"/> PTS18BLK (18" Black) <input type="checkbox"/> PTS24BLK (24" Black) Consult Factory For Custom Stem Heights	<input type="checkbox"/> STKP1AB (8" Stake Brass) <input type="checkbox"/> STKP2AB (8.5" Stake Brass) <input type="checkbox"/> STKP3AB (14" Stake Brass) <input type="checkbox"/> STKP1BLK (8" Stake Black) <input type="checkbox"/> STKP2BLK (8.5" Stake Black) <input type="checkbox"/> STKP3BLK (14" Stake Black) <input type="checkbox"/> PRM (Heavy Traffic Fined Post) <input type="checkbox"/> RMBAB (3" Round Mounting Base - Aged Brass) <input type="checkbox"/> RMBBLK (3" Round Mounting Base - Black)

OPTIONS & ACCESSORIES



G4 Bi-Pin LED Lamp
 8-14 Volts, 2700K 80CRI
 2.5 Watt-200lm
 3.0 Watt-250lm
 3.5 Watt-300lm



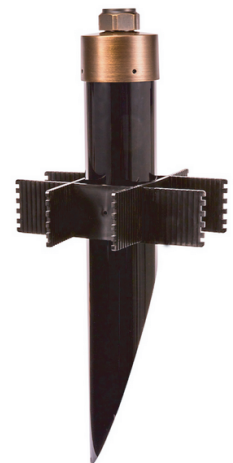
PATHSTEM (PTS) Extruded Brass with integrated Socket and Pass Through Wiring. Aged Brass or Black.



SLOTTED GROUND STAKES (STK)
 Plastic Ground Stakes with Wiring Slots and 1/2" NPT Threading. Aged Brass or Black.

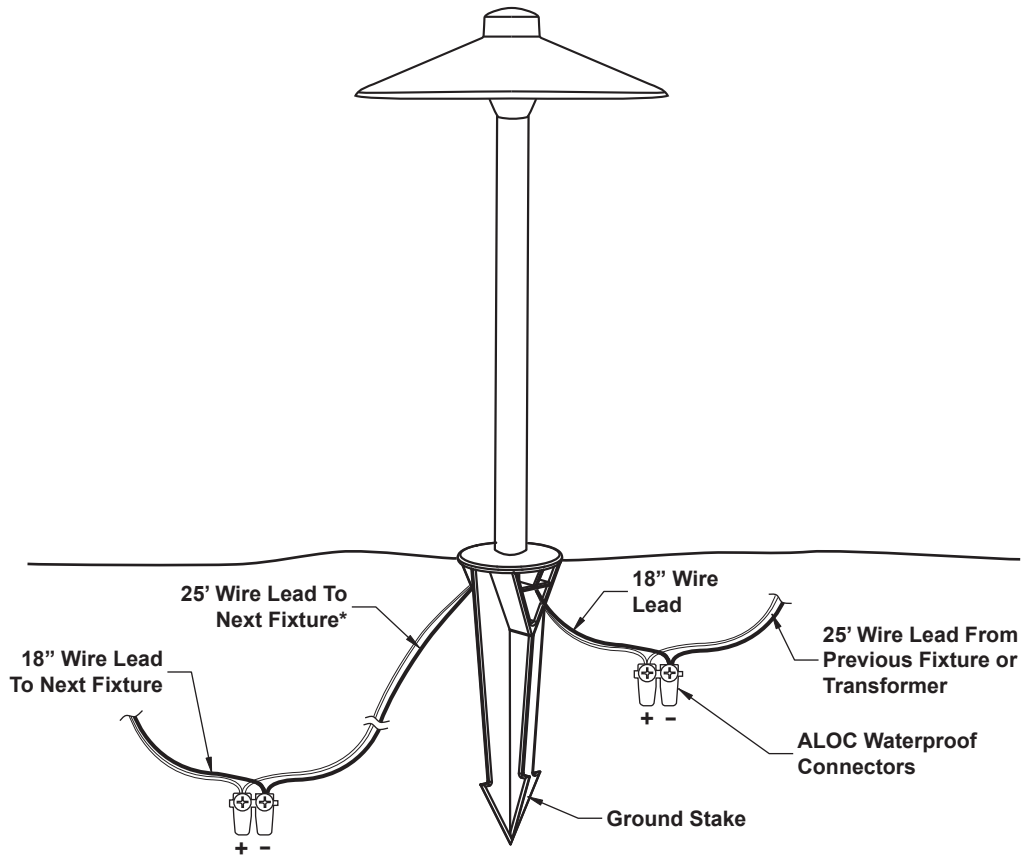


RMB 3" Dia. Brass Mounting Base with 1/2" NPT Thread and Wireway. Mounts to Flat Surfaces. 3" Wood Screws Included.



PERMASTAKE (PRM) Heavy Duty Mounting Stake for deep anchoring in high traffic areas and/or longer Mounting Stems. 18.5" Long with 3" Dia. PVC Body. 9" Wide Stabilizing Fins and Locking Brass Cap.

INTALLATION (12 Volt In-Grade)



*Terminate And Cap Leads if Last Fixture On Run