

## PATHSCAPE-850

AREA, PATH, AND BED LUMINAIRE

### CONSTRUCTION:

Die-Cast Solid Brass Housing. Extruded Brass Riser Stem. Spun Brass Shade. Housing, Stem, and Lens are Gasketed to an IP66 Ingress Standard of the Lamp Chamber. Stem has 1/2" IPS Thread at base.

### FINISH:

Aged Brass Finish (AB) is a Patina Process Giving the Raw Brass Components a Time-Weathered Look and is Enhanced with UV-Stabilizers for a Long Lasting Look with Superior Corrosion Resistance and Durability.

Black Finish (BLK) is a Two Stage Finish on the Raw Brass Components. A High-Adhesion Primer is Applied over the Raw Brass. The Black Coat is Applied over the Primer and Contains UV-Stabilizers Resulting in an Extremely Durable, Long Lasting, Fade Resistant Coating that is Superior To Ordinary Powdercoats.

Underside Of Reflector is finished with a White Coating for Increased Light Reflectance and Diffusion.

### LENS:

Clear Frosted UV-Stabilized Polycarbonate for Light Diffusion. Lens Is Shielded From View Above 90° By Housing. Optional Clear Lens Included. Lens is Gasketed to Housing and Stem.

### STEM AND LAMP SOCKET:

G4 Bi-Pin Spring Loaded Ceramic with Lamp Clips. Lamp Socket Integrated Into Stem. Socket is Factory Wired and comes with Dual Lead Pass Through Wiring.

### LAMP:

LED G4 Bi-Pin 8-12 VDC. Operates From -20° to 50°C. Lamp is 2700K CCT, 80 CRI and has a Lifetime > 25,000 Hours. Lamp is available in 2.5 Watt - 200 lm, 3.0 Watt - 250 lm, and 3.5 Watt -350lm

### WARRANTY:

Lifetime Housing Warranty.

### Certifications:

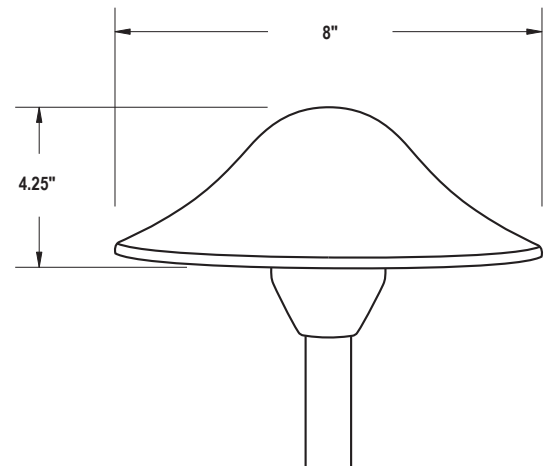
Complies with the requirements of UL-1838 and CAN/CSA-C22.2 No. 250.7. Identified with the ETL & cETL Listed Mark



PSC-850  
Aged Brass



PSC-850  
Black Coating



Weight: 2.24lbs

2025174

## ORDERING

Ordering Example: PSC850-BLK-3.5WG4-PTS12BLK-STKP3BLK

| Luminaire | Finish   | Lamp  | Stem   | Options  |
|-----------|--|---|--|--|
| Luminaire | Finish   | Lamp  | Stem   | Options  |
| PSC850    | <input type="checkbox"/> AB - Aged Brass<br><input type="checkbox"/> BLK - Black | <input type="checkbox"/> 2.5WG4 (200lm-2700K)<br><input type="checkbox"/> 3.0WG4 (250lm-2700K)<br><input type="checkbox"/> 3.5WG4 (300lm-2700K) | <input type="checkbox"/> PTS12AB (12" Aged Brass)<br><input type="checkbox"/> PTS18AB (18" Aged Brass)<br><input type="checkbox"/> PTS24AB (24" Aged Brass)<br><input type="checkbox"/> PTS12BLK (12" Black) Brass)<br><input type="checkbox"/> PTS18BLK (18" Black)<br><input type="checkbox"/> PTS24BLK (24" Black)<br><br>Consult Factory For Custom Stem Heights | <input type="checkbox"/> STKP1AB (8" Stake Brass)<br><input type="checkbox"/> STKP2AB (8.5" Stake Brass)<br><input type="checkbox"/> STKP3AB (14" Stake Brass)<br><input type="checkbox"/> STKP1BLK (8" Stake Black)<br><input type="checkbox"/> STKP2BLK (8.5" Stake Black)<br><input type="checkbox"/> STKP3BLK (14" Stake Black)<br><br><input type="checkbox"/> PRM (Heavy Traffic Fined Post)<br><input type="checkbox"/> RMBAB (3" Round Mounting Base - Aged Brass)<br><input type="checkbox"/> RMBBLK (3" Round Mounting Base - Black) |

## OPTIONS & ACCESSORIES



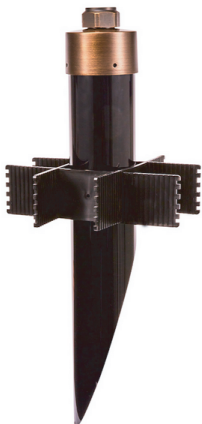
**G4 Bi-Pin LED Lamp**  
 8-14 Volts, 2700K 80CRI  
 2.5 Watt - 200lm  
 3.0 Watt - 250lm  
 3.5 Watt - 300lm



**RMB** 3" Dia. Brass Mounting Base with 1/2" NPT Thread and Wireway. Mounts to Flat Surfaces. 3" Wood Screws Included.



**EXTENSION RISERS** Extruded Brass with 1/2" NPT Threading. Aged Brass or Black. Custom Lengths Available, Consult Factory.



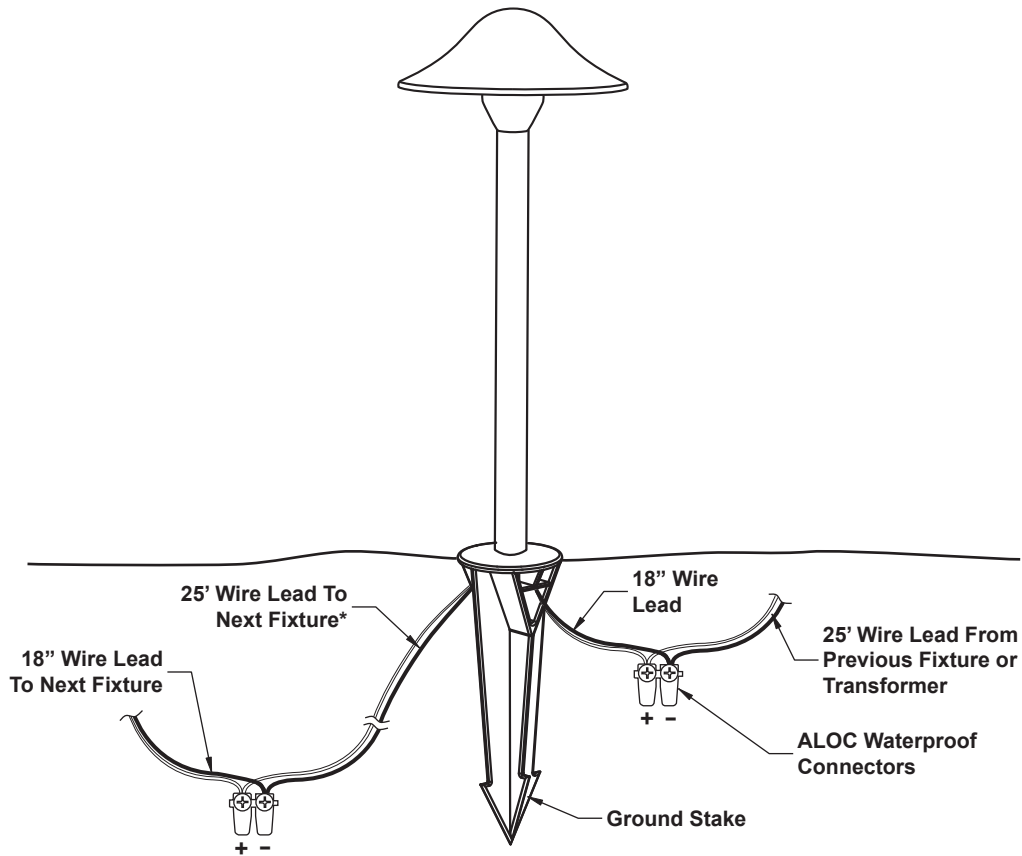
**PERMAPOST (PRM)** Heavy Duty Mounting Stake for Deep Anchoring in High Traffic Areas and/or Longer Mounting Stems. 18.5" Long with 3" Dia. PVC Body. 9" Wide Stabilizing Fins and Locking Brass Cap.



P1 (8") P2 (8.5") P3 (14")

**SLOTTED GROUND STAKES (STK)**  
 Plastic Ground Stakes With Wiring Slots and 1/2" NPT Threading. Aged Brass Or Black.

## INSTALLATION (12 Volt In-Grade)



\*Terminate And Cap Leads if Last Fixture On Run