

# UPSCAPE-200BT

MINI-FLOOD ACCENT/UPLIGHT



## SPECIFICATIONS

### CONSTRUCTION:

Die-Cast Solid Brass Housing, Shroud, and Knuckle. CNC Brass Thumb-screw. 1/2" NPT Threading From Knuckle for Mounting. Sealed Lens and Housing Provide IP66 Ingress Protection of the Lamp Chamber.

### FINISH:

Aged Brass Finish (AB) is a Patina Process Giving the Raw Brass Components a Time-Weathered Look and is Enhanced with UV-Stabilizers for a Long Lasting Look with Superior Corrosion Resistance and Durability.

The Black Finish (BLK) is a Two Stage Finish on the Raw Brass Components. A High-Adhesion Primer is Applied over the Raw Brass. The Black Coat is Applied over the Primer and Contains UV-Stabilizers Resulting in an Extremely Durable, Long Lasting, Fade Resistant Coating that is Superior To Ordinary Powdercoats.

### LENS:

Clear Convex Glass Lens. Shroud Is Adjustable.

### LAMP SOCKET:

MR16 Spring Loaded Ceramic, Dual Contact with Lamp Clips. Pre-Wired With Dual Pass Through Leads.

### LAMP:

BT-ALLY Bluetooth Integrated RGBW MR16 Lamp Operates Between 10-14VDC and 2-4Watts. 430 Max Lumens. All Lamps are Flood (F) Type with a 40° Beam Spread. Unlimited RGB Color Wheel and Color Presets Tuneable White from 2700K-4700K 80CRI Min. Dimming is from 1%-100% for All Colors. Full Lamp Control with the Alliance bt App (See Page 3).

### Mounting:

Fixture Comes With a Color Matched 8" Plastic Stake. Other Options Available (See Page 2).

### Wiring:

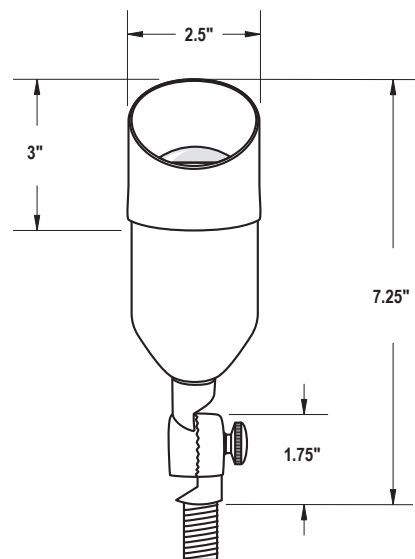
Fixture has Pre-Installed 16AWG Leads. Primary 25' Lead and Secondary Pass Through 18" Lead for Daisy Chaining of Multiple Fixtures. Wiring is Color Matched to Housing.

### Warranty:

10 Year Warranty on Housing and LED Components.

### Certifications:

Complies with the requirements of UL-1838 and CAN/CSA-C22.2 No. 250.7. Identified with the ETL & cETL Listed Mark.




Weight: 2.5lbs



2025174

## ORDERING

Ordering Example: UPSC200BT-BLK-BTALLYMR16-3000K-STAKEP2BLK-RISER6BLK

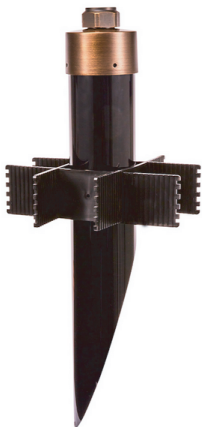
Luminaire	Finish	Lamp	Mounting	Options
Luminaire	Finish	Lamp	Mounting	Options
UPSC200BT	<input type="checkbox"/> AB - Aged Brass <input type="checkbox"/> BLK - Black	<input type="checkbox"/> BTALLYMR16 (Bluetooth RGBW) 	<input type="checkbox"/> STKP1AB (8" Stake Aged Brass) <input type="checkbox"/> STKP2AB (8.5" Stake Aged Brass) <input type="checkbox"/> STKP3AB (14" Stake Aged Brass) <input type="checkbox"/> STKP1BLK (8" Stake Black) <input type="checkbox"/> STKP2BLK (8.5" Stake Black) <input type="checkbox"/> STKP3BLK (14" Stake Black) <input type="checkbox"/> PRM (Heavy Traffic Finned Post) <input type="checkbox"/> RMBAB (3" Round Mounting Base - Aged Brass) <input type="checkbox"/> RMBBLK (3" Round Mounting Base - Black)	<input type="checkbox"/> RISER6AB (6" Brass ) <input type="checkbox"/> RISER6BLK (6" Black) <input type="checkbox"/> RISER12AB (12" Brass) <input type="checkbox"/> RISERBLK (12" Black) <input type="checkbox"/> RISER18AB (18" Riser) <input type="checkbox"/> RISERBLK (18" Black) <input type="checkbox"/> LADPTAB (L-Adapter Brass) <input type="checkbox"/> TADPTAB (T-Adapter Brass) <input type="checkbox"/> LADPTBLK (L-Adapter Brass) <input type="checkbox"/> TADPTBLK (T-Adapter Brass) <input type="checkbox"/> TREEMNT (Tree & Surface Mount J-Box ) <input type="checkbox"/> BHCL (Side Glare Reducing Black Honeycomb) <input type="checkbox"/> FLI (Frosted Diffusing Lens Insert)

## OPTIONS & ACCESSORIES



P1 (8")   P2 (8.5")   P3 (14")

**SLOTTED GROUND STAKES (STK)**  
 Plastic Ground Stakes With Wiring Slots and 1/2" NPT Threading. Aged Brass Or Black.



**PERMAPOST (PRM)** Heavy Duty Mounting Stake for Deep Anchoring in High Traffic Areas and/or Longer Mounting Stems. 18.5" Long with 3" Dia. PVC Body. 9" Wide Stabilizing Fins and Locking Brass Cap.

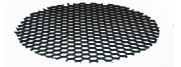


**EXTENSION RISERS** Extruded Brass with 1/2" NPT Threading. Aged Brass or Black. Custom Lengths Available, Consult Factory.



**ADAPTERS** Brass Adapters in L and T Shapes for Special Mountings. 1/2" NPT Threading and can be used in Conjunction With All Other Mounting Options and Risers. Aged Brass or Black.

**Black Honeycomb Louver**  
 Reduces Side Glare. Internal Mount.



**Frosted Lens Insert**  
 Diffusing Lens Insert for Enhanced Wall Washing. Internal Mount.



**TREE MOUNT** 4.2" x 5.6" Aluminum, Black Powdercoated Junction Box with (2) 3/4" Mounting Ears. Gasketed Sie Entry. Suitable for Tree Mounting and Surface Mounting. Waterproof Cord Seal and 1/2" NPT Threaded Opening. Hanger Bolts Included.



**RMB** 3" Dia. Brass Mounting Base with 1/2" NPT Thread and Wireway. Mounts to Flat Surfaces. 3" Wood Screws Included.

## BLUETOOTH SYSTEM INFORMATION



**BT ALLY  
MR16 Lamp**



**Alliance BT App Screenshots**

BT ALLY Lamps use a Bluetooth Mesh network and are controlled with the Alliance BT App available for Apple and Android Devices. The App provides total control over all fixtures on the Site's Mesh Network. Features Include RGB Tuning with 30,000 Colors, Preset Colors, Dimming from 1% to 100%, Scene Control & Theme Creation, and White Color Tuning from 2700K to 4000K.

Bluetooth Range Extenders (BTRE) are required in the BT Ally System (See Page 4). Typical Bluetooth Ranges from 10-30ft so large installations will not Mesh properly. Bluetooth Signal Strength can suffer from obstructions, weather, and interference from other EM sources. Extenders increase signal range up to 100ft depending on site conditions. Multiple Bluetooth Extenders are often needed for proper control. Careful Site Planning with fixture locations, distances, and line of site between fixtures and extenders will ensure proper and full communication with the luminaires. For More on Planning, Installation, and Control Please View the Alliance bt How-To Guide and BT Training Guides.

For More on Planning, Installation, and Control Please View the Alliance bt How-To Guide and bt System Training Handbook:

**Alliance bt How-To Guide:** <https://usaltg.com/wp-content/uploads/2025/06/bt-How-to-Guide.pdf>

**Alliance bt System Training Handbook:** <https://usaltg.com/wp-content/uploads/2025/06/bt-Training-Handbook.pdf>

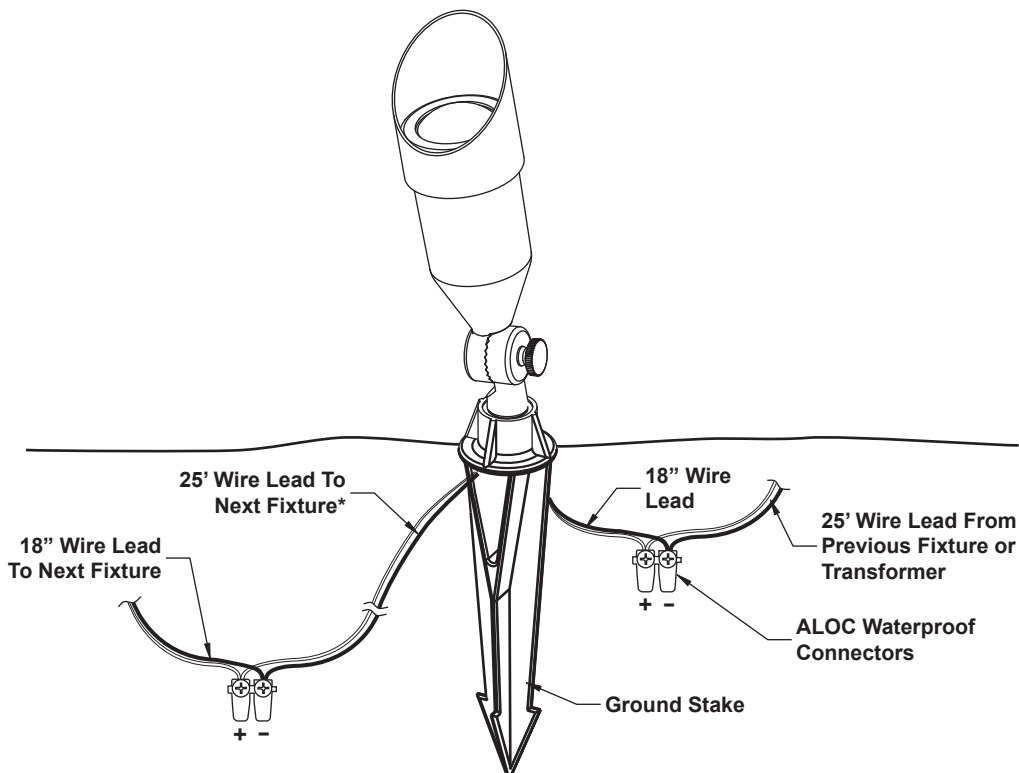
The Alliance BT App is Available for Free Download:



**Apple Devices:** <https://apps.apple.com/us/app/alliance-bt/id1318574131>

**Android Devices:** [https://play.google.com/store/apps/details?id=com.ws.mesh.custom.rgb\\_cct](https://play.google.com/store/apps/details?id=com.ws.mesh.custom.rgb_cct)

## INTALLATION (12 Volt In-Grade)



**\*Terminate And Cap Leads if Last Fixture On Run**