

# TENON MOUNTED ARM

# XBA

PROJECT NAME: \_\_\_\_\_

PROJECT TYPE: \_\_\_\_\_

## FEATURES

### Arm

Durable corrosion resistant, cast aluminum construction.

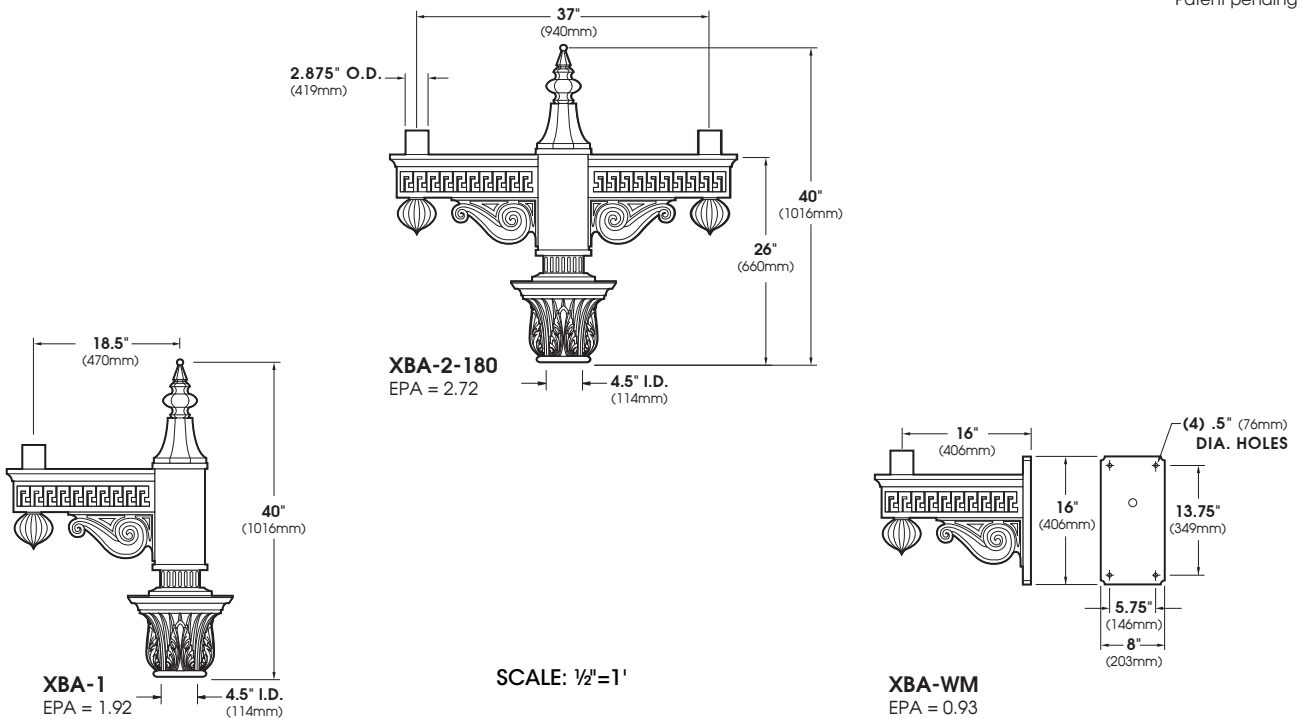
### Finish

Electrostatically applied TGIC Polyester Powder Coat on substrate prepared with 20 PSI power wash at 140°F. Four step media blast and iron phosphate pretreatment for protection and paint adhesion. 400°F bake for maximum hardness and durability.



## XBA

Patent pending



## ORDERING INFORMATION

Spec/Order Example: XBA-1/RAL-9005-S

Configuration	<input type="checkbox"/> XBA-WM	<input type="checkbox"/> XBA-2-180	<input type="checkbox"/> XBA-2-180	<input type="checkbox"/> XBA-4-90	<input type="checkbox"/> XBA-5-90
Finish*	<input type="checkbox"/> Black RAL-9005-T	<input type="checkbox"/> White RAL-9003-T	<input type="checkbox"/> Grey RAL-7004-T	<input type="checkbox"/> Dark Bronze RAL-8019-T	<input type="checkbox"/> Green RAL-6005-T

\*Standard texture finish  
For smooth finish replace suffix "T" with suffix "S"  
(Example: RAL-9005-S)  
Consult factory for custom colors