

SOLID STATE AREA LIGHTING

LCZ SERIES-LED

SPECIFICATIONS

LUMINAIRE

High Impact clear polycarbonate diffusing lens provided with durable corrosion resistant cast aluminum housing. Top is hinged for access. Luminaire base has 3" I.D. opening for tenon. All hardware is stainless steel.

LED POWER ARRAY™

Three-dimensional array of individual LED Tubes fastened to a retaining plate. Each LED Tube consists of circuit board populated with a multiple of LED's and is mechanically fastened to a radial aluminum heat sink. An acrylic Lens and end cap protects the LED Tube's internal components.

VERTICAL POWER ARRAY™ WITH GLASS REFRACTOR:

LED Tubes are aligned vertically and arranged radially to produce an even raw light distribution that simulates standard light sources. Array is secured within a 6" Prismatic Glass Refractor which provides the optical control. Used in conjunction with clear smooth or clear patterned lens.

VERTICAL POWER ARRAY™:

LED Tubes are aligned vertically and arranged radially to produce an even raw light distribution that simulates standard light sources. Produces a minimal glare, symmetric diffuse light distribution. Used in conjunction with clear patterned or opal lens.

LED EMITTERS

High Output LED's are driven at 350mA for nominal 1 Watt output each. LED's are available in standard Neutral White (4000K), or optional Cool White (5000K) or Warm White (3000K). Consult Factory for other LED options.

LED DRIVER

UL and CUL recognized High Power Factor, Constant Current LED drivers operate on input voltages from 120-277VAC, 50/60hz. Consult Factory for 347-480VAC. Driver is mechanically fastened to a retaining bracket. Main power quick disconnect provided. Driver has a minimum 4KV of internal surge protection, 10KV & 20KV Surge Protector optional. Dimming and High-Low Driver options available.

FINISH

Polyester powder coat incorporates four step iron phosphate process to pretreat metal surface for maximum adhesion. Top coat is baked at 400°F for maximum hardness and exterior durability.

PROJECT NAME: _____

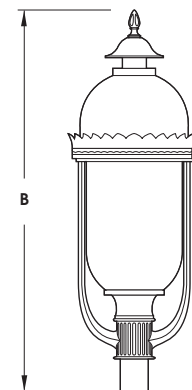
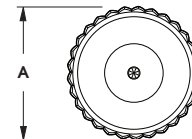
PROJECT TYPE: _____



LCZ*

*LCZ MODEL SHOWN

PATENT PENDING



FIXTURE	A	B
LCZ	16" 406mm	49" 1245mm
LCZA	18.5" 470mm	39" 991mm
LCZB	24" 610mm	37" 940mm

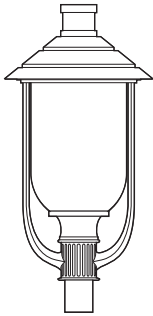


2015149

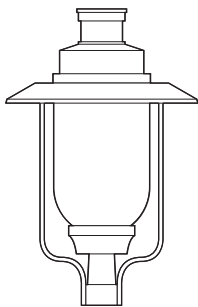
LCZ SERIES - LED

S P E C I F I C A T I O N S

OPTIONAL STYLES

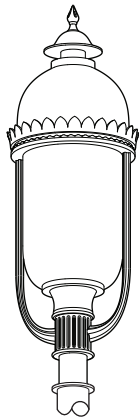


LCZA



LCZB

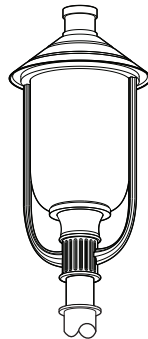
LED POWER ARRAY™ MODULES



LCZ-LED E.P.A.= 2.12

**GLASS REFRACTOR w/
VERTICAL ARRAY**
Available in:
6 Array 36 LED Max.

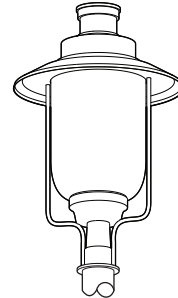
VERTICAL ARRAY
Available in:
8 Array 64 LED Max.
10 Array 80 LED Max.



LCZA-LED E.P.A.= 1.93

**GLASS REFRACTOR w/
VERTICAL ARRAY**
Available in:
6 Array 36 LED Max.

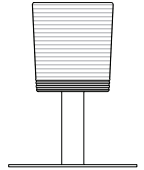
VERTICAL ARRAY
Available in:
8 Array 64 LED Max.
10 Array 80 LED Max.



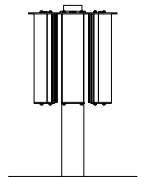
LCZB-LED E.P.A.= 2.00

**GLASS REFRACTOR w/
VERTICAL ARRAY**
Available in:
6 Array 36 LED Max.

VERTICAL ARRAY
Available in:
8 Array 64 LED Max.
10 Array 80 LED Max.



GRV - Glass Refractor
w/ Vertical Array
Base mount



VPA - Vertical Array
Base mount

Spec/Order Example: LCZ-LED/GRV-V/60WW347/3-90/RAL9003-T/DIM

O R D E R I N G S P E C / I N F O R M A T I O N

LUMINAIRE	OPTICS	# of LED's	COLOR	VOLTAGE	MOUNTING	FINISH	OPTIONS
LUMINAIRE	OPTICS	LED		MOUNTING		FINISH	OPTIONS
LUMINAIRE	GLASS REFRACTOR (CLEAR POLYCARBONATE LENS STANDARD)	No. LEDs	COLOR	VOLTAGE	ARM MOUNT	STANDARD TEXTURED FINISH	LENS OPTIONS:
<input type="checkbox"/> LCZ-LED	<input type="checkbox"/> GRV - III	<input type="checkbox"/> 36LED (41 Watts)	<input type="checkbox"/> NW (4000K)* *STANDARD	<input type="checkbox"/> 120	<input type="checkbox"/> 1	<input type="checkbox"/> BLACK RAL-9005-T	<input type="checkbox"/> OPAL SMOOTH POLYCARBONATE... WA
<input type="checkbox"/> LCZA-LED	<input type="checkbox"/> GRV - V	Wattages are Max Input Watts	<input type="checkbox"/> CW (5000K)	<input type="checkbox"/> 208	<input type="checkbox"/> 2-180	<input type="checkbox"/> WHITE RAL-9003-T	<input type="checkbox"/> CLEAR SMOOTH POLYCARBONATE... CP
<input type="checkbox"/> LCZB-LED	VERTICAL POWER ARRAY (OPAL POLYCARBONATE LENS STANDARD)	<input type="checkbox"/> 80LED (89 Watts)	<input type="checkbox"/> WW (3000K)	<input type="checkbox"/> 240	<input type="checkbox"/> 2-90	<input type="checkbox"/> GREY RAL-7004-T	<input type="checkbox"/> HOUSE SIDE SHIELD... HS
	<input type="checkbox"/> VPA - SYM ...	<input type="checkbox"/> 64LED (72 Watts)	OTHER LED COLORS AVAILABLE CONSULT FACTORY	<input type="checkbox"/> 277	<input type="checkbox"/> 3-90	<input type="checkbox"/> DARK BRONZE RAL-8019-T	<input type="checkbox"/> DIMMABLE DRIVER(S) (0-10V)..... DIM
		<input type="checkbox"/> 48LED (53 Watts)		<input type="checkbox"/> 347	<input type="checkbox"/> 3-120	<input type="checkbox"/> GREEN RAL-6005-T	<input type="checkbox"/> HIGH-LOW DIMMING FOR HARDWIRED SWITCHING OR NON-INTEGRATED MOTION SENSOR..... HLSW
		Wattages are Max Input Watts		<input type="checkbox"/> 480	WALL MOUNT	FOR SMOOTH FINISH REPLACE SUFFIX "T" WITH SUFFIX "S" (EXAMPLE: RAL-9500-S)	<input type="checkbox"/> PHOTO CELL + VOLTAGE PROTECTOR..... PC+V
					<input type="checkbox"/> WM	SEE USALTG.COM FOR ADDITIONAL COLORS	<input type="checkbox"/> 10KV SURGE PROTECTOR..... 10SP
					POST TOP		<input type="checkbox"/> 20KV SURGE PROTECTOR (277V & 480V Only)..... 20SP
					<input type="checkbox"/> PT		