

TENON MOUNTED ARM

XAZ

PROJECT NAME: _____

PROJECT TYPE: _____

FEATURES

Arm

Durable corrosion resistant, cast aluminum construction.

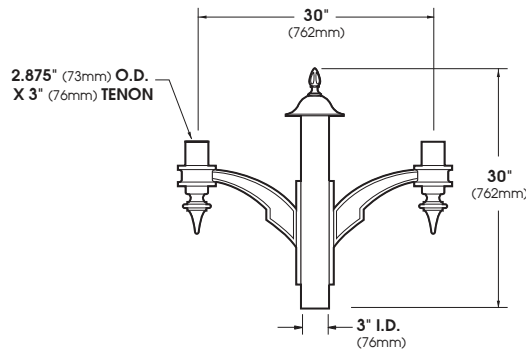
Finish

Electrostatically applied TGIC Polyester Powder Coat on substrate prepared with 20 PSI power wash at 140°F. Four step media blast and iron phosphate pretreatment for protection and paint adhesion. 400°F bake for maximum hardness and durability.



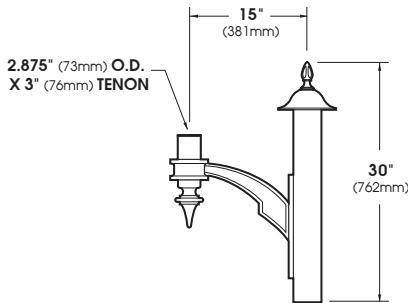
XAZ-UP

Patent pending



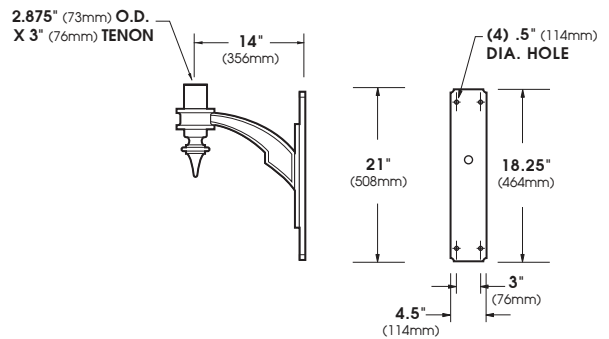
XAZ-UP-2-180

EPA = 1.29



XAZ-UP-1

EPA = 0.90

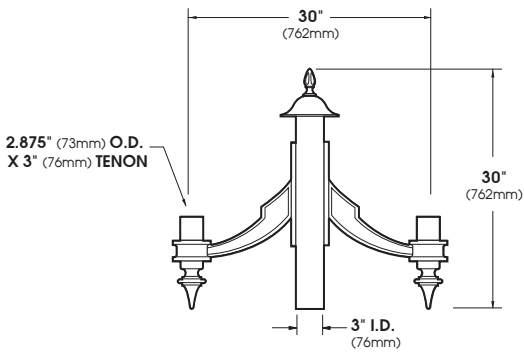


XAZ-UP-WM

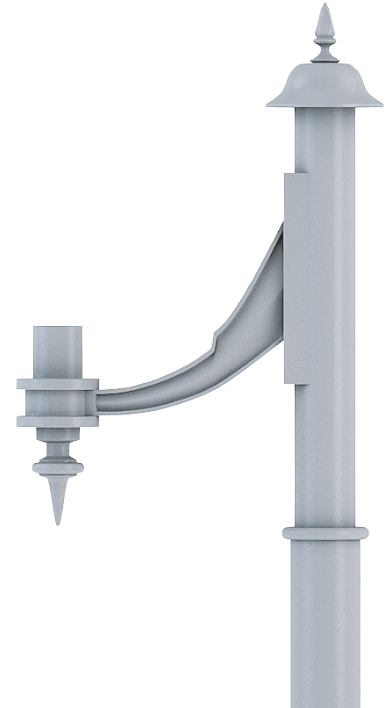
EPA = 0.52

SCALE: 1/2"=1'

XAZ

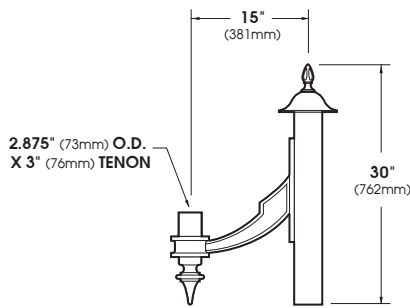


XAZ-DN-2-180
EPA = 1.29

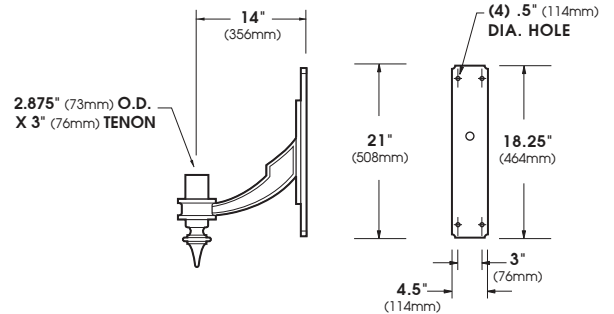


XAZ-DN

Patent pending



XAZ-DN-1
EPA = 0.90



XAZ-DN-WM
EPA = 0.52

SCALE: 1/2"=1'

ORDERING INFORMATION

Spec/Order Example: XAZ-4-120/RAL-8019-S

Positioning								
	<input type="checkbox"/> XAZ-PM-UP	<input type="checkbox"/> XAZ-PM-DN						
Configuration								
	<input type="checkbox"/> XAZ-WM	<input type="checkbox"/> XAZ-1	<input type="checkbox"/> XAZ-2-180	<input type="checkbox"/> XAZ-3-180	<input type="checkbox"/> XAZ-3-120	<input type="checkbox"/> XAZ-4-120	<input type="checkbox"/> XAZ-4-90	<input type="checkbox"/> XAZ-5-90
Finish*	<input type="checkbox"/> Black RAL-9005-T	<input type="checkbox"/> White RAL-9003-T	<input type="checkbox"/> Grey RAL-7004-T	<input type="checkbox"/> Dark Bronze RAL-8019-T	<input type="checkbox"/> Green RAL-6005-T	*Standard texture finish For smooth finish replace suffix "T" with suffix "S" (Example: RAL-9005-S) Consult factory for custom colors		

