

PROJECT NAME: _____

FIXTURE TYPE: _____

CANLUME-R18

Canopy & Parking Garage Luminaire

The CANLUME-S18 is a Round, Architecturally Styled Canopy Mount Luminaire Available from 41 to 156 Watts. Type-II, Type-III, Type-IV, and Type-VS Distributions Make it a Versatile Area & Parking Garage Lighter Suitable for Mounting Heights from 10-30Ft.

SPECIFICATIONS

Housing:

Die Cast and Sand Cast Aluminum Housing, Integral Heatsink. Includes 3ft Cord.

Listings & Ratings:

ETL Listed for Wet Location. ANSI/UL 1598, 8750.

IP65 (IP66 With Pendant (PA), and Trunnion (T) Mounts Only).

Finish:

Bronze or White Powdercoat Over a Chromate Conversion Coating. Consult Factory for Custom Colors.

Lens:

Clear, UV-Stabilized, Impact Resistant Array Lens with Integral Optics or UV-Stabilized White Polycarbonate Drop Lens. Lenses are gasketed to seal LED Array.

Mounting Options:

Surface Mount (NM) Includes Single Person Mounting Bracket and Fits Standard 4" Electrical Junction Box. Trunnion Mount (T) is Height Adjustable. Pendant Mount (PA) Has a 15" Downrod. Mounts Shipped in a Separate Carton.

LED's:

High Power, Long-Life LED's are available in 3000K, 4000K, and 5000K. LED's have a 80CRI Minimum.

Wattages:

42 Watts
 74 Watts
 114 Watts
 160 Watts

Driver:

Electronic Driver Available in 120-277V (U) or 347-240V (H) 50/60Hz. Drivers are less than 20% THD and PF>>0.90. Integral 6kV Surge Protection. 0-10V Dimming is standard with a range of 100%-10%. Dimming Control Current is 150Micro-amps.

Controls:

Factory Installed Controls are Wired For 0-10V and/or Switching. Consult Factory for Remote Dimming Wiring. Consult Factory for Interfacing with Non-Factory Control Systems.

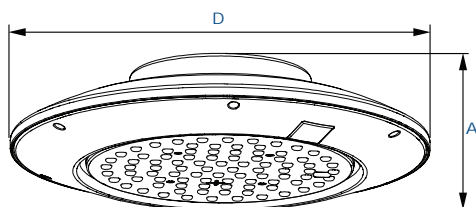
Warranty:

5 Year Warranty in -40°C to +50°C Environments.



Dimensions

| | |
|--------------|-------------|
| Diameter (D) | 18" (457mm) |
| Height (A) | 4" (104mm) |



Certification & Listings:



BAA compliant

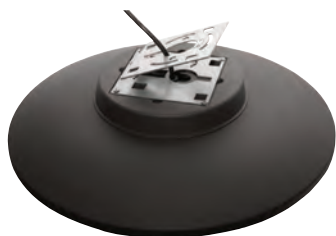


U.L. Listed for Wet Location

2025174

| Order Information Example: | | CLR18-Type-II-72W-U-30K-CP-Z-NM | | | | | | |
|----------------------------|---|---------------------------------|-----------------------------|-------------------------------------|--|----------------------------------|--|---|
| Model | Optics | Wattage | Driver | CCT | Lens | Color | Mounting | Options |
| CLR18 | Type-II Type-III Type-IV Type-VS | 42W 74W 114W 160W | U 120 - 277V H 347- 480V | 30K 3000K 40K 4000K 50K 5000K | CP Clear Polycarbonate Array Lens WP White Polycarbonate Drop Lens* | Z Bronze W White C Custom* | NM Surface T Trunnion * PA Pendant * | SF Single Fuse* DF Double Fuse* SP 10kV Surge Protector S2 Microwave Sensor With Dimming, 8' to 40' Mounting Heights* S4 Microwave Sensor With On/Off, 8' to 19' Mounting Heights* BU Battery Backup, 90 Minutes Up to 65W Max* BUC Battery Backup, Cold Start -20°C; 90 Minutes Up to 65W Max* |
| | | | | | *Available in Type-V Only | *Consult Factory | *Mountings Shipped Separately | *120-277V Only |

Mounting Options:



Surface Mount Bracket (NM)

Stamped Steel 2-Piece Bracket Allows One-Person Installation.
Mounts Directly to Standard 4" Electrical Box



Adjustable Trunnion Mount (T)

Stamped Steel Height Adjustable Trunnion, Powdercoat Finish,
Includes Hardware

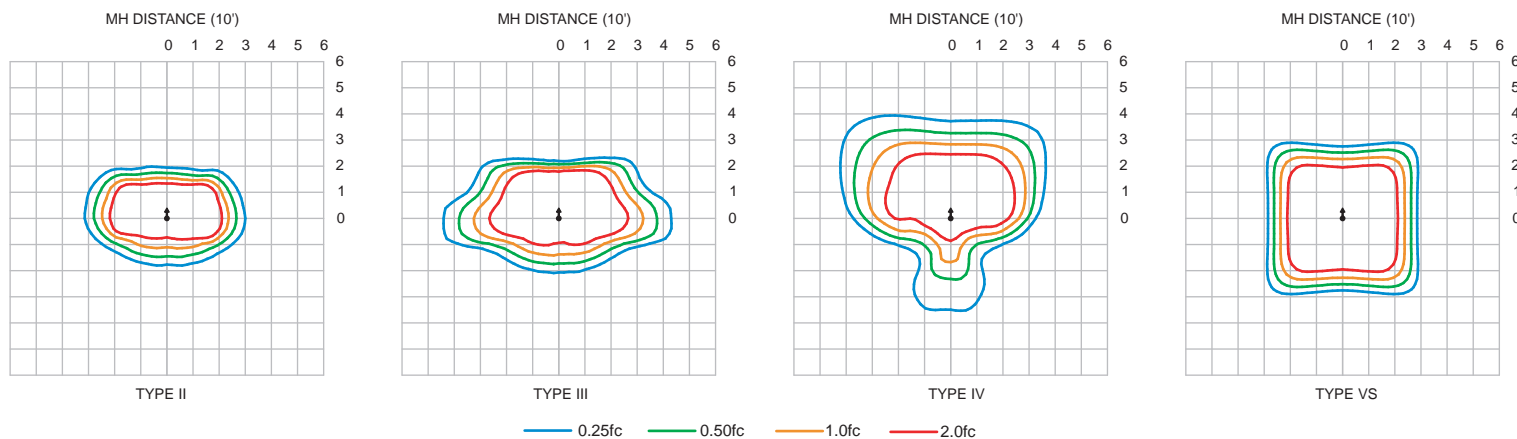


Pendant Mount (PA)

Includes Top and Bottom Covers, Brackets, and 3/4" Diameter, 15"
Long Downrod, Powdercoat Finish, Includes Hardware.

Photometric Data - IsoFootcandle Plots

CLR18-74W-40K-CP - 10' Mounting Height



Photometric Performance

| Input Watts: | | 42 | 74 | 114 | 160 |
|--------------|-------|------------------|--------|--------|--------|
| Distribution | CCT | Delivered Lumens | | | |
| Type II | 3000K | 5,256 | 9,234 | 14,205 | 19,888 |
| | 4000K | 5,469 | 9,608 | 14,782 | 20,694 |
| | 5000K | 5,682 | 9,982 | 15,357 | 21,500 |
| Type III | 3000K | 5,277 | 9,271 | 14,263 | 19,968 |
| | 4000K | 5,491 | 9,646 | 14,842 | 20,777 |
| | 5000K | 5,705 | 10,022 | 15,419 | 21,586 |
| Type IV | 3000K | 4,815 | 8,459 | 13,015 | 18,219 |
| | 4000K | 5,010 | 8,803 | 13,543 | 18,959 |
| | 5000K | 5,206 | 9,145 | 14,069 | 19,697 |
| Type VS | 3000K | 5,280 | 9,277 | 14,272 | 19,981 |
| | 4000K | 5,495 | 9,653 | 14,851 | 20,791 |
| | 5000K | 5,709 | 10,029 | 15,429 | 21,600 |

Projected Lumen Maintenance

| Data shown for 5000 CCT | | Compare to MH | | | | |
|--------------------------------------|---------------------------------------|---------------|------------|------------|-------------|---------------------|
| TM-21-11 | Input Watts | Initial | 25,000 Hrs | 50,000 Hrs | 100,000 Hrs | Calculated LED Life |
| L70 Lumen Maintenance @ 25°C / 77°F | All wattages up to and including 159w | 1.00 | 0.98 | 0.95 | 0.91 | 327,000 |
| L70 Lumen Maintenance @ 50°C / 122°F | | 1.00 | 0.94 | 0.89 | 0.78 | 134,000 |
| L80 Lumen Maintenance @ 40°C / 104°F | | 1.00 | 0.96 | 0.93 | 0.86 | 141,000 |

NOTES:

1. Projected per IESNA TM-21-11. Data references the extrapolated performance projections for the base model in a 25°C ambient, based on 10,000 hours of LED testing per IESNA LM-80-08.
2. Compare to MH box indicates suggested Light Loss Factor (LLF) to be used when comparing to Metal Halide (MH) systems.