

## UPSCAPE-395

MINI-FLOOD ACCENT/UPLIGHT

### SPECIFICATIONS

**CONSTRUCTION:**

Die-Cast Solid Brass Housing, Shroud, and Knuckle. CNC Brass Thumbscrew. 1/2" NPT Threading From Knuckle for Mounting. Twist Lock Shroud Seals Housing and Lens With Pressure Lock Gasket for IP66 Ingress Protection of the LED Chamber.

**FINISH:**

Aged Brass Finish (AB) is a Patina Process Giving the Raw Brass Components a Time-Weathered Look and is Enhanced with UV-Stabilizers for a Long Lasting Look with Superior Corrosion Resistance and Durability.

The Black Finish (BLK) is a Two Stage Finish on the Raw Brass Components. A High-Adhesion Primer is Applied over the Raw Brass. The Black Coat is Applied over the Primer and Contains UV-Stabilizers Resulting in an Extremely Durable, Long Lasting, Fade Resistant Coating that is Superior To Ordinary Powdercoats.

**LENS:**

Frosted Tempered Glass Lens.

**LED MODULE:**

Integrated LED Module With Flood Optics (40° Beam Spread). LED's are 3000K 80CRI Min. and have a Rated Lifetime of 30,000 Hours. Module Operates from 10-14VDC, 11 Watts and 1200lm. LED Module is Field Replaceable and is Factory Prewired to the Leads.

**Mounting:**

Fixture Comes With a Color Matched 8.5" Plastic Stake. Other Options Available (See Page 2).

**Wiring:**

Fixture has Pre-Installed 16AWG Leads. Primary 25' Lead and Secondary Pass Through 18" Lead for Daisy Chaining of Multiple Fixtures. Wires Color Matched To Housing.

**Warranty:**

10 Year Warranty on Housing and LED Components.

**Certifications:**

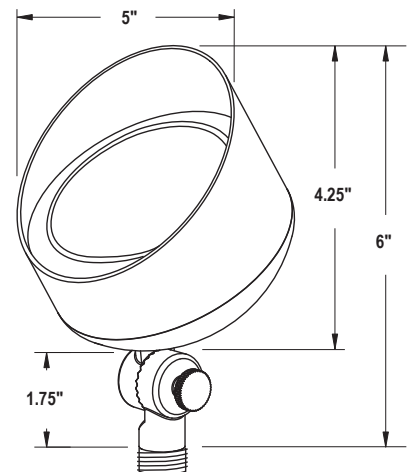
Complies with the requirements of UL-1838 and CAN/CSA-C22.2 No. 250.7. Identified with the ETL & cETL Listed Mark



UPSC395  
Aged Brass



UPSC395  
Black



Weight: 4.8lbs

2025174

## ORDERING

Ordering Example: UPSC200-BLK-BTALLYMR16-3000K-STAKEP2BLK-RISER6BLK

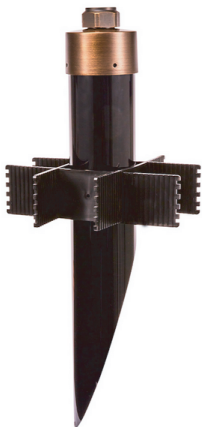
Luminaire	Finish	LED	Mounting	Options
Luminaire	Finish	LED	Mounting	Options
UPSC395	<input type="checkbox"/> AB - Aged Brass <input type="checkbox"/> BLK - Black	<input type="checkbox"/> 11W-3000K (1200lm Module Flood - 40° Beam Angle)	<input type="checkbox"/> STKP1AB (8" Stake Aged Brass) <input type="checkbox"/> STKP2AB (8.5" Stake Aged Brass) <input type="checkbox"/> STKP3AB (14" Stake Aged Brass) <input type="checkbox"/> STKP1BLK (8" Stake Black) <input type="checkbox"/> STKP2BLK (8.5" Stake Black) <input type="checkbox"/> STKP3BLK (14" Stake Black) <input type="checkbox"/> PRM (Heavy Traffic Finned Post) <input type="checkbox"/> RMBAB (3"Round Mounting Base - Aged Brass) <input type="checkbox"/> RMBBLK (3"Round Mounting Base - Black)	<input type="checkbox"/> RISER6AB (6" Brass) <input type="checkbox"/> RISER6BLK (6" Black) <input type="checkbox"/> RISER12AB (12" Brass) <input type="checkbox"/> RISERBLK (12" Black) <input type="checkbox"/> RISER18AB (18" Brass) <input type="checkbox"/> RISERBLK (18" Black) <input type="checkbox"/> LADPTAB (L-Adapter Brass) <input type="checkbox"/> TADPTAB (T-Adapter Brass) <input type="checkbox"/> LADPTBLK (L-Adapter Brass) <input type="checkbox"/> TADPTBLK (T-Adapter Brass) <input type="checkbox"/> TREEMNT (Tree & Surface Mount J-Box ) <input type="checkbox"/> BHCL (Side Glare Reducing Black Honeycomb) <input type="checkbox"/> FLI (Frosted Diffusing Lens Insert)

## OPTIONS & ACCESSORIES



P1 (8")   P2 (8.5")   P3 (14")

**SLOTTED GROUND STAKES (STK)**  
 Plastic Ground Stakes With Wiring Slots and 1/2" NPT Threading. Aged Brass Or Black.



**PERMAPOST (PRM)** Heavy Duty Mounting Stakefor Deep Anchoring in High Traffic Areas and/or Longer Mounting Stems. 18.5" Long with 3" Dia. PVC Body. 9" Wide Stabilizing Fins and Locking Brass Cap.



**EXTENSION RISERS** Extruded Brass with 1/2" NPT Threading. Aged Brass or Black. Custom Lengths Available, Consult Factory.



**ADAPTERS** Brass Adapters in L and T Shapes for Special Mountings. 1/2" NPT Threading and can be used in Conjunction With All Other Mounting Options and Risers. Aged Brass or Black.



**TREE MOUNT** 4.2" x 5.6" Aluminum, Black Powdercoated Junction Box with (2) 3/4" Mounting Ears. Gasketed Sie Entry. Suitable for Tree Mounting and Surface Mounting. Waterproof Cord Seal and 1/2" NPT Threaded Opening. Hanger Bolts Included.



**RMB** 3" Dia. Brass Mounting Base with 1/2" NPT Thread and Wireway. Mounts to Flat Surfaces. 3" Wood Screws Included.

**INSTALLATION** (12 Volt In-Grade)

